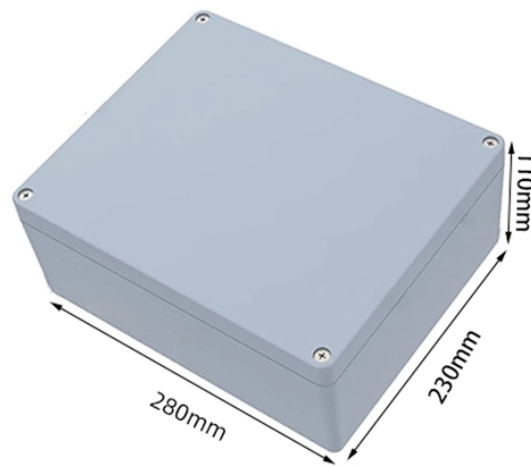


# Zero coefficient requirement for relay protection



## Overview

In order to have operating current approximately zero for balanced load and three phase external fault currents, some modification must be done for coefficients  $C_0; C_1; C_2$ . These coefficients should be modified at line end with higher CT ratio. Purpose: Protective relay settings shall not limit transmission loadability; not interfere with system operators' ability to take remedial action to protect system reliability and; be set to reliably detect all fault conditions and protect the electrical network from these faults. The selection and applications of. The objective of relay protection is to quickly isolate a faulty section from both ends so that the rest of the system can function satisfactorily.

## Zero coefficient requirement for relay protection



The major requirements on protection relays are speed, sensitivity and selectivity. Fault calculations are used when checking if these requirements are fulfilled.



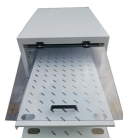
Effective relay protection in HV/MV substations requires a thorough approach encompassing calculations, precise settings, meticulous coordination, informed relay selection, and ...



A fast and selective arc fault mitigation for air-insulated LV & MV switchgear and Relion protection and control relays and sensor technology protect staff and plant facilities for many years.



The relay must be able to discriminate (select) between those ...



The relay must be able to discriminate (select) between those conditions for which prompt operation is required and those for which no operation, or time delayed operation is required.



According to the North American Electric Reliability Corporation (NERC), one of the leading factors for such undesired operations is incorrect relay settings in different zones of protection.



Where remote protection is required to provide secondary or backup protection, it should be verified that the sensitivity of the remote backup protection would detect all types of faults and for all credible ...



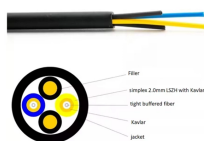
Reserved. Set transmission line relays applied at the load center terminal, remote from generation stations, so they do not operate at or below 115% of the maximum current flow from the load to the ...



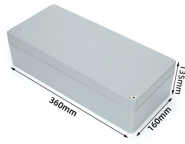
This application note will show how to calculate and pick the settings on the relay for the general application case, both CT at the two line end have the equal CT ratio, and CT's at two line ends have ...



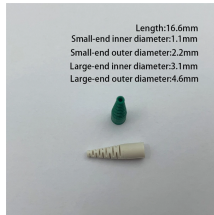
Because the protection areas of the interlocking-based protection concept are not overlapping and because they do not reach into the protection area of the next relays in the protection chain, a ...



Based on this analysis, a simple methodology for setting K0 properly is proposed, which is implementable with commercially available relays. The ...



The guide presents protective relay degradation, reliability, and failure information so as to establish a baseline from which recommended maintenance practices can be linked to a degradation ...



Protective relays and devices have been developed over 100 years ago to provide “lastline” of defense for the electrical systems. They are intended to quickly identify a fault and isolate it so the balance of ...

## Contact Us

For more information, pricing, or custom solutions, please contact us:

Website: <https://samastersbaseball.co.za>

Email: [sales@samastersbaseball.co.za](mailto:sales@samastersbaseball.co.za)

Phone: +27 63 874 2095

Address: 15 Innovation Drive, Technopark, Stellenbosch, 7600, South Africa

This document is for informational purposes only. Specifications subject to change without notice.

