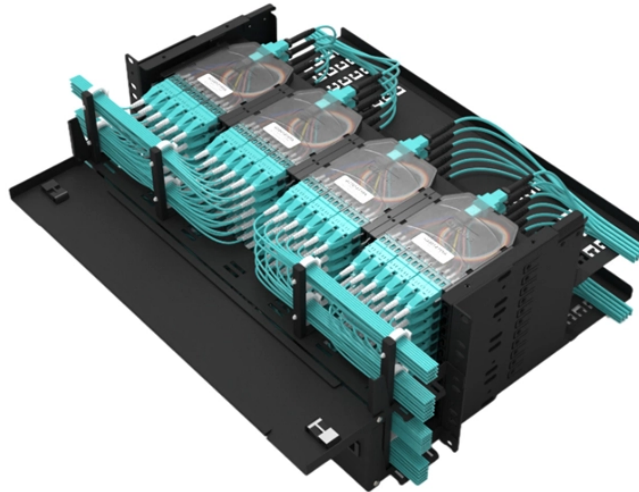


Wiring process for floor-mounted electrical distribution boxes



Overview

Learn how to install a distribution box safely and correctly. Covers wiring, placement, standards, and expert tips for a compliant setup.



Wiring process for floor-mounted electrical distribution boxes



CAUTION Floor Box should be installed by a qualified electrician in accordance with national and local electrical codes. — Residential Floor Box shown with Duplex receptacle and Cover Plate. ...



The boxes are prewired with Walkerflex® Prefabricated Modular Wiring System. Follow the installation instructions supplied with the Walkerflex System to connect the power cables to the box.



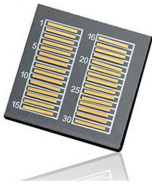
Walkerflex is a modular in-floor power distribution system featuring standardized cable, connectors and prewired junction boxes that allow for faster on-site deployment of power. The system is designed to ...



First of all, you need to have a simple understanding of the definition of a distribution box, and make it clear which kind of distribution box you want to install. This is important to properly install it.



Find out how to properly wire an electrical panel box with a comprehensive diagram and step-by-step instructions.



Your one-stop shop for resources and information to design and build floor box specs for new constructions, renovations, and more. Discover all our resources, tools, and specifications for floor ...



Above Grade (Upper Floors) - Fasten Box to concrete form. CAUTION - PROVIDE ADEQUATE CONCRETE THICKNESS UNDER THE BOX TO PRESERVE THE FIRE RATING OF THE FLOOR ...



Your one-stop shop for resources and information to design and build floor box specs for new constructions, renovations, and more. Discover all our resources, tools, ...



Learn how to install a distribution box safely and correctly. Covers wiring, placement, standards, and expert tips for a compliant setup.



Learn how to wire a distribution box step by step! This video shows real on-site footage of electrical installation, demonstrating safe and standardized wiring methods used by...



Wire power and data outlets and attach to inner frame. Cut a hole in the subfloor* 10mm larger than the box stated frame size. For example, a SB-738 is frame size 320x250mm and should have a ...

Huijue engineering specific Fiber optic

HJ GROUP offers a wide variety of product types for you to choose from.



Insert the electrical cable into the plastic box through one of the cable clamp slots in the box. The cable can also be inserted through one of the round knockouts using a non-metallic cable clamp (not ...

Contact Us

For more information, pricing, or custom solutions, please contact us:

Website: <https://samastersbaseball.co.za>

Email: sales@samastersbaseball.co.za

Phone: +27 63 874 2095

Address: 15 Innovation Drive, Technopark, Stellenbosch, 7600, South Africa

This document is for informational purposes only. Specifications subject to change without notice.

