

## Wiring of the Lighthouse Remote Control Distribution Box



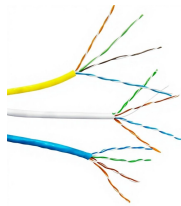
## Wiring of the Lighthouse Remote Control Distribution Box



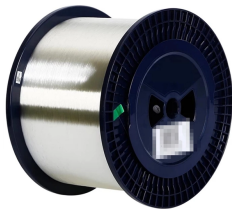
The ease and simplicity of installing the Lighthouse makes it the pedestal of choice for many electricians. The design allows all work to be completed out in the open with no confining workspaces.



Hello! I am an AI chatbot specifically trained to assist you with the Lighthouse REMOTE 5102PN Operating Manual. I have thoroughly reviewed the document and can help you locate the exact ...



See the attached dimensional drawing of the base of the Lighthouse. Suggested locations for the power supply as well as water, phone and cable TV utilities are identified.



Installing and powering your lighthouse place your Lighthouse on any flat, level area on your layout, securing it to the layout by driving screws through the holes in the base.



Wiring: The power pedestal shall be completely pre-wired at the factory to the load side of the compression lug assembly. All load copper wiring shall be of high stranding and tin plated to resist ...



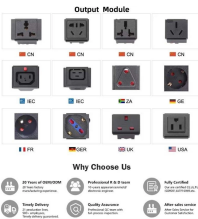
Three Levels of Maintenance. Lighthouse maintenance is inherently stratified, as is maintenance on other facilities and vessels. Simple tasks are performed at the lowest unit level and ...



Need help? Do you have a question about the REMOTE 2 Series and is the answer not in the manual?



Wiring Diagram - Aluminum Mechanical Bus Bar Wire Colors Per NEC Line 1 L1 Black Neutral Line 2 Line 3 Ground White L2 Red L3 Blue



As illustrated in Figure 1, attach one wire to a POWER terminal on the underside of the Lighthouse and connect it to the Power/A terminal on the transformer or the #1 terminal.



The R0xP Power distribution box powers the 0.1 CFM ApexRp without requiring an extra cable, providing a convenient solution. in a single package. Lighthouse Worldwide Solutions reserves the ...



The remote configuration requires two adequately rated direct wire runs between each Light Head and Distribution Box. The wiring between Light Head and Distribution Box must be 14AWG, 600V, 90C ...



Lighthouse allows you to centrally access, manage, and monitor a network of Opengear devices (referred to as nodes throughout this guide). With the Automation Edition subscription, you can ...



Since the lighthouse base is hollow a small hole in the top and another in the bottom were drilled to allow wiring to pass through so that it was possible to use an ...

## Contact Us

For more information, pricing, or custom solutions, please contact us:

Website: <https://samastersbaseball.co.za>

Email: [sales@samastersbaseball.co.za](mailto:sales@samastersbaseball.co.za)

Phone: +27 63 874 2095

Address: 15 Innovation Drive, Technopark, Stellenbosch, 7600, South Africa

This document is for informational purposes only. Specifications subject to change without notice.

