

What type of switch is used for fiber optic monitoring



Overview

Optical switches are essential in fiber-optic communication systems, especially in large-scale telecommunication networks and data centers. They are used for network protection, optical signal routing, testing, and monitoring. Definition: devices used e. in optical fiber networks to selectively switch optical signals from one fiber to another Category: fiber optics and waveguides More general term: optical switches Related: optical switches fibers optical fiber communications Page views in 12 months: 695 DOI:. SwitchLight™ is a patented, Layer 1 optical switching device designed for networking monitoring, test tool sharing, optical multicasting, and protection switching applications. The fiber has a very small core diameter of approximately 8. Among the essential components in fiber-based networks are fiber optic switches, which help optimize data transmission, network management, and traffic flow.

What type of switch is used for fiber optic monitoring



Optical switches are essential in fiber-optic communication systems, especially in large-scale telecommunication networks and data centers. They are used for network protection, optical signal ...



Optomechanical switches employ physical movements to control light paths within a fiber network, typically redirecting signals using mirrors or mechanical shutters.



Optical switches are the conduits that direct light signals within fiber optic networks. They differ from traditional electrical switches by manipulating light paths rather than electrical currents.



A fiber switch is a critical component in modern networking that manages the flow of data across fiber-optic cables. Unlike traditional Ethernet switches, which use copper cables to transmit ...



A: Optical fiber switch systems are used in telecommunications, military, computer networking, and environmental monitoring, among other industries. They are critical in providing high ...



Active
Optical
Cable

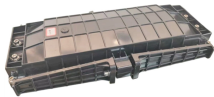
SwitchLight is a fiber optic switching device designed for network monitoring, ...



Matrix Optical Switches (MOS) have emerged as a transformative technology, revolutionizing fiber cable monitoring by providing unprecedented flexibility, efficiency, and precision.



SwitchLight is a fiber optic switching device designed for network monitoring, optical add-drop, multicast, and wavelength selective switching.



Fiber-optic switches can be useful for general testing purposes in fiber optics. For example, instead of manually reconnecting fiber-optic connectors too often, one should install a switch where this can be ...



Common switch features include rack mountable and LED indicators. An important environmental parameter to consider for fiber optic switches is the operating temperature.



A fiber optic network controlled switch is a handy tool when guiding data traffic in a network utilising fiber optic cables—which offer faster speeds and reduced latency than standard ...

Contact Us

For more information, pricing, or custom solutions, please contact us:

Website: <https://samastersbaseball.co.za>

Email: sales@samastersbaseball.co.za

Phone: +27 63 874 2095

Address: 15 Innovation Drive, Technopark, Stellenbosch, 7600, South Africa

This document is for informational purposes only. Specifications subject to change without notice.

