

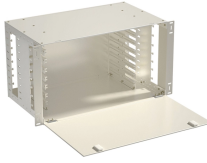
# What tools are used for cable distribution boxes



## Overview

To install distribution box systems, you'll use hand tools such as screwdrivers and pliers. A measuring tape and. In modern electrical systems, cable distribution boxes (also known as electrical distribution boxes or distribution boxes) play a crucial role as the key hub for managing, distributing, and protecting circuits. Whether it is residential buildings, commercial facilities or industrial sites, the. These compact tools won't bump into neighboring terminal posts and disrupt the rest of your circuit board, making them ideal for accessing posts that your hands can't reach. Alternate between winding. Recycled Claim Standard 100 (RCS100) certified products contain recycled content (>95%) that has been independently verified at each stage of the supply chain, from the source to the final product. The purchase of Recycled Claim Standard (RCS) certified products demonstrates demand for recycled. Distribution boxes contain many protective devices like circuit breakers, fuses, and isolator switches to distribute and regulate power from the main power supply to multiple circuits in other buildings, and to prevent damage and fire hazards, usually installed in electrical rooms, basements, or. Problem solving tools enable linemen to perform their job easier, faster, and safer.

## What tools are used for cable distribution boxes



Shop essential linemen hand tools for electrical power lines. From hammers to cable cutters, equip your team for safe and efficient operations



Tools: Prepare necessary tools such as screwdriver, wire stripper, wire stripper, multimeter, insulation resistance tester, etc., to ensure that the tools are in good condition and ...



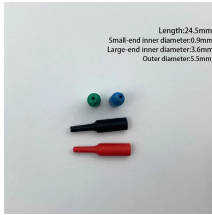
Choose from our selection of cable installation tools in a wide range of styles and sizes. Same and Next Day Delivery.



Always use the right tools — like crimping tools for terminals and a torque screwdriver to tighten screws correctly. Don't overtighten, but don't leave anything loose either.



Install distribution box systems with essential hand tools like screwdrivers and pliers, plus power tools such as drills and impact drivers for efficient setup.



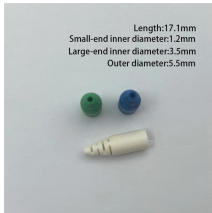
CommScope offers a complete line of easy-to-use access terminals, copper and fiber splice closures, patch closures and accessories to speed deployment.



Cable Matters 7-in-1 Network Tool Kit with RJ45 Ethernet Crimping Tool, Punch Down Device, Punch Down Stand, Cable Tester, RJ45 Connectors & Boots, and Wire Strippers - Carrying Case Included



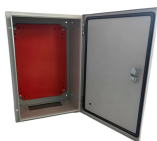
When power lines go underground, different challenges occur and specialized tools and equipment are necessary. Problem solving tools enable linemen to perform their job easier, faster, and safer. There ...



Distribution boxes are used for power distribution, circuit protection and cable management, while junction boxes are only used for wire connection and branching.



Luckily we have pulled together twenty of the top wire and cable-pulling equipment for electricians and cable installers. This is a list that contains options for both the beginner and the expert electrician. ...



Install distribution box systems with essential hand tools like screwdrivers and pliers, plus power tools such as drills and impact drivers for efficient setup.

## Contact Us

For more information, pricing, or custom solutions, please contact us:

Website: <https://samastersbaseball.co.za>

Email: [sales@samastersbaseball.co.za](mailto:sales@samastersbaseball.co.za)

Phone: +27 63 874 2095

Address: 15 Innovation Drive, Technopark, Stellenbosch, 7600, South Africa

This document is for informational purposes only. Specifications subject to change without notice.

