

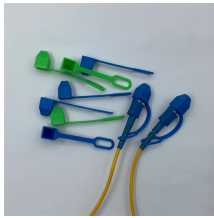
What to connect to the port of the hybrid optical electrical cable



Overview

To connect the first-generation hybrid cable to a device, we need to connect the optical fibers with LC connectors to the common commercial optical module on the device's optical port and connect the copper wires with an RJ45 connector or a Phoenix connector to the device's. To connect the first-generation hybrid cable to a device, we need to connect the optical fibers with LC connectors to the common commercial optical module on the device's optical port and connect the copper wires with an RJ45 connector or a Phoenix connector to the device's. To connect the first-generation hybrid cable to a device, we need to connect the optical fibers with LC connectors to the common commercial optical module on the device's optical port and connect the copper wires with an RJ45 connector or a Phoenix connector to the device's electrical port. The. A hybrid copper-fiber cable is a cable that integrates optical fiber and conductive copper wire. Combining them in this manner makes installation easier, reduces cabling density, and provides a more stable. A hybrid optical-electrical switch can be directly connected using a pigtail, connected to an HDF, or connected through a hybrid cable terminal box.

What to connect to the port of the hybrid optical electrical cable



Connectors at two ends of each optical fiber in a hybrid cable must be connected to the TX and RX ports on optical modules, one end to a TX port and the other end to an RX port.



Perform optical-electrical separation for the hybrid cable inside the terminal box. Specifically, connect the power cable of the hybrid cable to the power adapter inside the terminal box through the cord end ...



There are no connectors at both ends of the cable. You can select main cables as needed. A pigtail cord is used for connecting a powered device. The two optical fibers and two copper wires are connected ...



Access your records, results, and appointment information through the NewYork-Presbyterian patient portal. Manage your care with ease and security.



Forgot your password? Forgot your username? Need help? ©2026 McGraw Hill. All Rights Reserved.



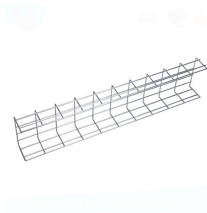
To connect the first-generation hybrid cable to a device, we need to connect the optical fibers with LC connectors to the common commercial optical module on the device's optical port and connect the ...



Connect the LC optical fiber pigtail to an optical port of the S5732-H hybrid optical-electrical switch and connect the power cable of the hybrid cable to an electrical port of the S5732-H hybrid optical ...



Running, walking, cycling, swimming, skiing, triathlons - no matter how you move, you can record your active lifestyle on Garmin Connect. It's the only online community created specifically for Garmin ...



Sign in to access McGraw Hill's educational resources and tools for enhanced learning and teaching.



This guide provides an in-depth exploration of optical hybrid cables, detailing their construction, technical standards, and the myriad advantages they offer.



Forgot your password? By clicking "Sign In", I confirm that I have read and agree to the terms of the McGraw Hill Terms of Use, the Video Viewing Notice, the Consumer Purchase Terms if applicable, ...



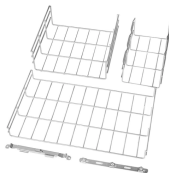
Connect, our all-in-one course platform streamlines your prep work, allows you to add instructors to any section, and surfaces more information in fewer clicks. Its innovative features empower you to take ...



With Connect, each of your students can enjoy a personalized digital learning experience designed to help them optimize study time and ramp up their grade potential.



Connect the jumper to the corresponding ports on the HDF and hybrid optical-electrical switch. During the connection, ensure that the port numbers on the HDF are the same as those on the switch.



[Garmin Connect | Sign In](#)



[Forgot Password?](#)

Contact Us

For more information, pricing, or custom solutions, please contact us:

Website: <https://samastersbaseball.co.za>

Email: sales@samastersbaseball.co.za

Phone: +27 63 874 2095

Address: 15 Innovation Drive, Technopark, Stellenbosch, 7600, South Africa

This document is for informational purposes only. Specifications subject to change without notice.

