

# What should I do first when plugging a fiber optic switch into an FC



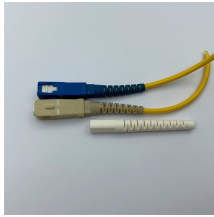
## Overview

Set your fiber optic-to-Ethernet converter box in a location near your Ethernet switch and plug in its power adapter. Here's a quick sketch to present the layout including some distances (in metres): Goal: Get internet in the Shed (brown area) and in the garage (grey). Fiber optic cabling is increasingly used to connect network switches and other datacom equipment, especially in long-distance and mission-critical applications. Most modern fiber-enabled network switches require an SFP transceiver module. Other than entry level network switches, most of today's network switches include one or more GiBC (Gigabit Converter) or SFP (Small Form-factor Pluggable) slots. Connecting a fiber patch panel to a switch is a critical step in setting up a fiber optic network. Here's a step-by-step guide on how to connect a fiber optic cable: 1. Get the wrong connector type, the wrong polish, or skip proper fusion splicing technique—and you're looking at elevated signal loss, increased back reflection, and a.

## What should I do first when plugging a fiber optic switch into an FC



Appropriate personnel should set up and test the communications system that will operate over the fiber optic cable plant to ensure it is proper for that system.



Remove the protective cover on the patch panel and insert the fiber optic cable into the appropriate port. Ensure that the cable is securely connected and fastened.



Confused about fiber optic pigtailed—which connector type, which polish, fusion or mechanical splice? Our guide covers LC vs SC, APC vs UPC, splicing methods, and real-world use ...



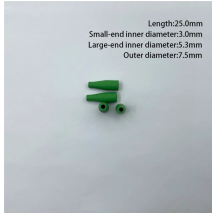
A comprehensive guide to fiber optic installation - everything you need to know about fiber optic cabling for your network installation.



However, setting up a fiber optic connection to your router can seem daunting if you're unfamiliar with the process. In this guide, we'll walk you through how to connect a fiber optic...



Always integrate duplex (two strand) fiber optic cabling or higher strand counts. Most modern SFP transceiver modules feature duplex LC connections. Terminate your fiber optic cabling with two LC ...



Insert the end of your fiber optic network line into the fiber optic connector on the converter box. Plug an Ethernet cable into the Ethernet port on the converter box and plug the other...



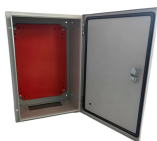
When connecting terminated duplex fiber optic cable between two network switches, ensure the connections are reversed between the SFP transceiver ports (connection A to B and B to A).



Insert one end of the fiber optic cable into the patch panel port. Connect the other end of the fiber optic cable to the networking device, such as a switch, router, or media converter.



Get internet in the Shed (brown area) and in the garage (grey area) ideally through optic fibre. The idea is to get a small switch in both the shed and in the garage too where the new optic ...



Insert the end of your fiber optic network line into the fiber optic connector on the converter box. Plug an Ethernet cable into the Ethernet port on the converter box ...

## Contact Us

For more information, pricing, or custom solutions, please contact us:

Website: <https://samastersbaseball.co.za>

Email: [sales@samastersbaseball.co.za](mailto:sales@samastersbaseball.co.za)

Phone: +27 63 874 2095

Address: 15 Innovation Drive, Technopark, Stellenbosch, 7600, South Africa

This document is for informational purposes only. Specifications subject to change without notice.

