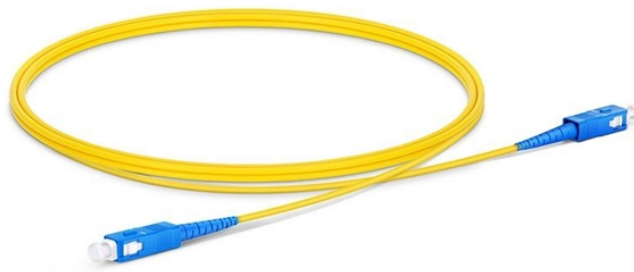


## What quota applies to the fiber optic main distribution frame



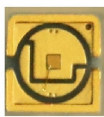
### Overview

The HDX Fiber Distribution Frame is a main cross-connect or interconnect patching frame for all fiber channels in the data center. One frame consolidates patching into an incredibly small footprint, with capacity for more than 3,168 LC fibers, or 15,552 fibers using 24-fiber MTP®. An Optical Distribution Frame (ODF) is the central hub for fiber splicing, termination, patching, and cable protection in modern optical networks. As data centers, enterprises, telecom operators, and smart-building infrastructures deploy increasingly dense fiber links, ODFs provide the structured. Fiber optic network design refers to the specialized processes leading to a successful installation and operation of a fiber optic network.

## What quota applies to the fiber optic main distribution frame



Those involved in fiber optic project design should already have a background in fiber optics, such as having completed a FOA CFOT certification course, and may have other training in the specialties of ...



Comprehensive guide to Optical Distribution Frames (ODF) for data centers. Learn ODF types, installation best practices, fiber management, patch panels, MPO/MTP solutions, and high ...



Distribution frames may grow to extremely large sizes. In major installations, audio distribution frames can have as many as 10,000 incoming and outgoing separate copper wires (balanced audio signals require two wires plus earth ground for each signal). Telephone signals do not use a separate earth ground wire, but some urban exchanges have about 250,000 wires on their MDF. Installing and rewiring these jumpers is a labour-intensive task, leading to attempts in the industry to devise so-called active ...



An Optical Distribution Frame (ODF) is a dedicated unit designed to organize, terminate, and interconnect fiber optic cables. It brings together fiber splicing, patching, and cable routing in a ...



The HDX Fiber Distribution Frame is a main cross-connect or interconnect patching frame for all fiber channels in the data center. One frame consolidates patching into an incredibly small footprint, with ...



In major installations, audio distribution frames can have as many as 10,000 incoming and outgoing separate copper wires (balanced audio signals require two wires plus earth ground for each signal).



An Optical Distribution Frame (ODF) is a dedicated unit designed to organize, terminate, and interconnect fiber optic cables. It brings together fiber ...



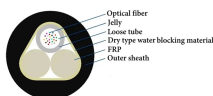
The capacity of the wiring optical cable distribution frame determines the maximum number of cores of the incoming optical cable. Under different splitting methods, the number of fiber ...



Typically, at least one 25-pair OSP Al-pair cable is installed from the nearest existing main campus Core or Distribution Facility to the MDF in the new building.



This guide provides a comprehensive engineering perspective on ODFs—beyond the basic “what is an ODF” explanation—covering structural design, fiber management, MPO/MTP ...



The capacity of the wiring optical cable distribution frame determines the maximum number of cores of the incoming optical cable. Under different ...



From a frame and rack standpoint, we offer GR-449 compliant rear cable access frames and zone 4 compliant front cable access frames. After selecting the type of frame that suits your network, ...



This guide provides a comprehensive engineering perspective on ODFs—beyond the basic “what is an ODF” explanation—covering structural ...



ODFs come in diverse designs, each tailored to specific environments, fiber counts, and operational needs. This guide explores the various types of ODFs, their features, and ideal applications.

## Contact Us

For more information, pricing, or custom solutions, please contact us:

Website: <https://samastersbaseball.co.za>

Email: [sales@samastersbaseball.co.za](mailto:sales@samastersbaseball.co.za)

Phone: +27 63 874 2095

Address: 15 Innovation Drive, Technopark, Stellenbosch, 7600, South Africa

This document is for informational purposes only. Specifications subject to change without notice.

