

# What is a relay protection logic unit



## Overview

A relay protection system typically consists of three components: the measurement unit, the logic unit, and the execution unit. It emphasizes selectivity, coordination, fault response, and system behavior rather than individual relay devices. They are activated by means which are not dependent on a continual AC supply. They include both. Protection relays are a very important part of electrical systems. Relay logic status includes the state of a relay element (picked up or dropped out), the state of an out ut contact (closed or open), and the state of a control input (asserted or deasserted).

## What is a relay protection logic unit



Protection relays have a crucial role in maintaining the safety, reliability, and integrity of electric networks. They recognize problems before they become serious. This decreases the ...



Feb 24, 2012· Types of protection relays are mainly based on their characteristic, logic, on actuating parameter and operation mechanism. Protective ...



The new, patented relay-to-relay logic communication technique repeatedly sends the status of eight programmable internal relay elements, encoded in a digital message, from one relay to the other ...



Relays may be fitted with a "target" or "flag" unit, which is released when the relay operates, to display a distinctive colored signal when the relay has tripped.



Name two protective devices For what purpose is IEEE device 52 used? Why are seal-in and 52a contacts used in the dc control scheme? In a typical feeder OC protection scheme, what does the ...



A relay protection system typically consists of three components: the measurement unit, the logic unit, and the execution unit. The system works by monitoring changes in electrical ...



Learn about Understanding Protection Relays and how they prevent damage to electrical systems due to overcurrent and faults. Protection relays are ...



An electrical device designed to detect some specified condition in a power system, and then command a circuit breaker either to trip or to close in order to protect the integrity of the power system, is called ...



Learn about Understanding Protection Relays and how they prevent damage to electrical systems due to overcurrent and faults. Protection relays are a very important part of electrical ...



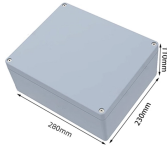
Types of protection relays are mainly based on their characteristic, logic, on actuating parameter and operation mechanism. Protective relays can be categorized based on their operating ...



There are breaker failure relays available that are based on microprocessors and have programmable logic. This gives the user the ability to ...



Protection is not measured by how many relays are installed, but by how deliberately their logic, coordination, and response hierarchy have been engineered to match system risk.



There are breaker failure relays available that are based on microprocessors and have programmable logic. This gives the user the ability to select the logic that is most suitable for their ...

## Contact Us

For more information, pricing, or custom solutions, please contact us:

Website: <https://samastersbaseball.co.za>

Email: [sales@samastersbaseball.co.za](mailto:sales@samastersbaseball.co.za)

Phone: +27 63 874 2095

Address: 15 Innovation Drive, Technopark, Stellenbosch, 7600, South Africa

This document is for informational purposes only. Specifications subject to change without notice.

