

# What is 24-core single-mode optical fiber



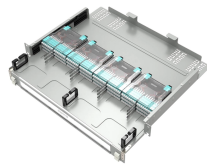
## Overview

A 24 strand single-mode armored fiber optic cable consists of 24 individual glass fibers, each capable of transmitting data using a single mode of light. Single-mode fibers have a small core diameter—typically around 9 microns—which allows only one path of light to travel through the. One of the most reliable and robust options available is the 24 strand single-mode armored fiber optic cable. Engineered to deliver exceptional signal integrity over long distances with minimal loss, this type of cable has become a cornerstone in telecommunications, enterprise networks, data. HES 24 Core, Single Tube, Steel Armored, Single Jacketed Fiber Optic Cable SM 9/125 $\mu$  Single Mode HES Brand Fiber Optic Cables HES brand fiber optic cables are designed with high performance and reliability, especially focusing on single mode fiber technology to meet long-distance transmission. In fiber-optic communication, a single-mode optical fiber, also known as fundamental- or mono-mode, is an optical fiber designed to carry only a single mode of light - the transverse mode. The latter is used for short-distance transmission, while the former is typically used for long-distance signal transmission. Please refer to the article.

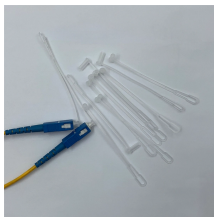
## What is 24-core single-mode optical fiber



Single-mode fiber optic cables use a stronger, brighter light source with less attenuation. Its ability to provide unlimited bandwidth simultaneously makes it a popular option in this fast-paced ...



Waves can have the same mode but have different frequencies. This is the case in single-mode fibers, where we can have waves with different frequencies, but of the same mode, which means that they ...



OverviewHistoryCharacteristicsConnectorsFiber optic switchesQuadruply clad fiberExternal links



It utilizes 900µm Tight Buffers, Aramid yarn strength members, and exclusive use of Corning<sup>®</sup> optical fibers. This cable is rated for all indoor installations, including plenum rated spaces and will have low ...



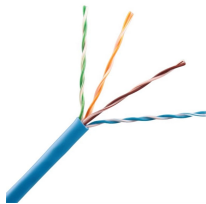
It comprises one glass or plastic fiber and features a tiny core of about 8-10 microns in diameter. This small core permits only one light mode to ...



Single-mode fiber optic cable (SMF) is a type of optical fiber designed to carry a single ray of light mode directly down the fiber core.



OS1 single mode fiber optic cables are made with a single mode fiber core, which means that they have a very small core diameter of 9 microns. This allows the cables to transmit data over much longer ...



A 24 strand single-mode armored fiber optic cable consists of 24 individual glass fibers, each capable of transmitting data using a single mode of light. Single-mode fibers have a small core ...



Reasonable design and precise control over the loose-tube fiber in the remainder of a long, fiber optic cable with excellent performance and temperature tensile properties.



Features: Single Mode Design: With a core-to-core diameter of 9/125 $\mu$ , single ...



Features: Single Mode Design: With a core-to-core diameter of 9/125 $\mu$ , single mode fiber technology provides high bandwidth and long range. Various Core Counts: Options of 4, 8, 12, and 24 cores to ...



It comprises one glass or plastic fiber and features a tiny core of about 8-10 microns in diameter. This small core permits only one light mode to propagate through the cable, minimizing ...



Fiber optic technology has transformed the way we transmit data, enabling faster, more reliable connections than traditional copper cables. Understanding fiber optic cable types is essential for ...

## Contact Us

For more information, pricing, or custom solutions, please contact us:

Website: <https://samastersbaseball.co.za>

Email: [sales@samastersbaseball.co.za](mailto:sales@samastersbaseball.co.za)

Phone: +27 63 874 2095

Address: 15 Innovation Drive, Technopark, Stellenbosch, 7600, South Africa

This document is for informational purposes only. Specifications subject to change without notice.

