

What fiber optic cable does a normal router use



Overview

It is a 'standard' single-mode fiber cable with an SC-APC connector at the end. You can't 'really' connect it directly to a random consumer router in most cases - it's meant to go into an optical fibre device. Unlike copper wires, which are limited by lower data transmission speeds, shorter transmission distances, and higher susceptibility to electromagnetic interference, fiber optic cables offer unparalleled performance and can cover much greater distances without bumping up against signal degradation. The process to connect fiber optic cable to router requires careful attention to detail, but I'll walk you through every critical step with the precision and clarity you deserve. Compatible router: Verify that your router supports fiber optic input (look for an SFP or WAN port labeled). A fiber router is a networking device designed specifically to work with a fiber-optic internet connection. Understanding compatibility, potential limitations, and when an upgrade is necessary will ensure you get the most out of your high-speed connection. This guide will break down everything you.

What fiber optic cable does a normal router use



However, setting up a fiber optic connection to your router can seem daunting if you're unfamiliar with the process. In this guide, we'll walk you through how to connect a fiber optic...



Connecting your router to the internet using fiber optics is a solution that guarantees fast signal transmission and a stable connection. However, choosing the right cables requires knowledge ...



It is a "standard" single-mode fiber cable with an SC-APC connector at the end. It's meant to connect to an ONT or ONR from your wall. You can't "really" connect it directly to a random ...



Briefly, an ONT is a modem that uses optical fiber cables that bridge the internet connection from an ISP (internet service provider) to the end user of fiber internet, while Ethernet ...



Fiber Optic Cable: This specialized cable contains glass or plastic strands that transmit data via light pulses. Most residential installations use single-mode SC/APC connectors.



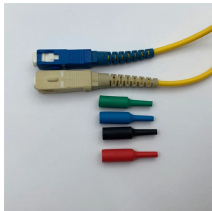
A fiber router is designed to interface with an Optical Network Terminal (ONT), which is the endpoint for your fiber-optic line. In contrast, a normal router connects to a modem.



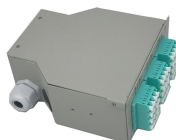
Here's the short answer: an ONT (Optical Network Terminal) is the device that connects your home directly to the fiber-optic network. It is similar to a modem and is built specifically for fiber ...



Yes, you can often use your existing router with fiber optic internet, but there are crucial considerations. Understanding compatibility, potential limitations, and when an upgrade is necessary will ensure you ...



The three main types of fiber optic cable are single mode fiber, multimode fiber, and plastic optical fiber. Single mode fiber has a small core and is used for long-distance, high-speed transmission.



The fiber optic cable does not plug directly into a standard home router because the signal type must be translated. The fiber line terminates at the Optical Network Terminal (ONT), ...

Contact Us

For more information, pricing, or custom solutions, please contact us:

Website: <https://samastersbaseball.co.za>

Email: sales@samastersbaseball.co.za

Phone: +27 63 874 2095

Address: 15 Innovation Drive, Technopark, Stellenbosch, 7600, South Africa

This document is for informational purposes only. Specifications subject to change without notice.

