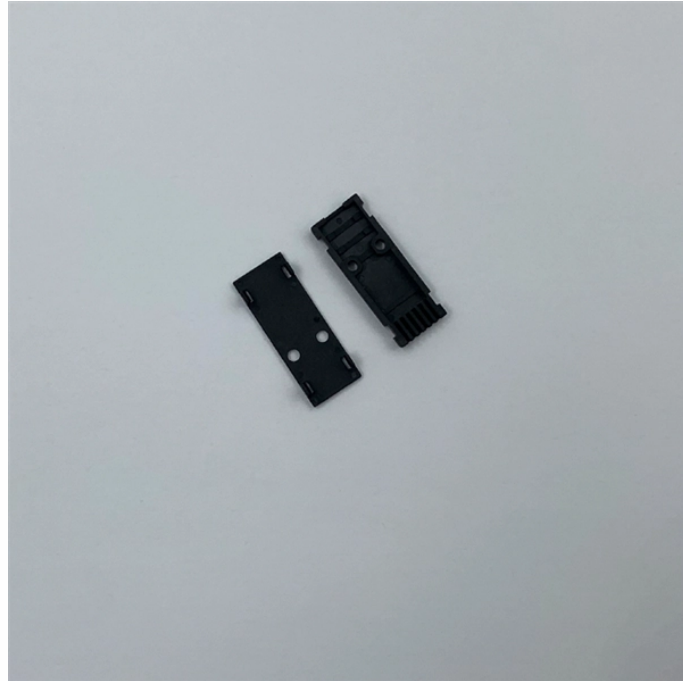


# What does CT in cable tray refer to



## Overview

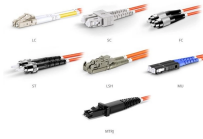
CT stands for Cable Tray. Understanding the "CT" Marks on single conductors for use in Cable Tray applications, where applicable. It provides a solution for installers who are looking for an economical support option, only require a shallow cable laying depth or need a low profile system, but still from a product that maintains excellent load. What does CT stand for?

We have 163 other meanings of CT in our Acronym Attic It has since grown to become the UK's largest manufacturer of steel wire cable tray. It will manufacture cable trays and cable ladders in a joint venture with a US firm but has not yet finalised who its partner will be. AI or Alum wire – Alum is short for aluminum. Aluminum is a lightweight wire option and can be used for. EAE Cable Tray System product E-Line CT is being manufactured as a hot dipped product that is used in heavy or medium duty application with its perforated design. Whether you're exploring these categories or simply seeking a quick definition, this page provides comprehensive information on CT. Explore abbreviations related to.

## What does CT in cable tray refer to



According to 392.10B (1a) single conductors used in cable tray must be labeled as CT rated. However, 392.10B (1c) states that equipment grounding conductors only need to be insulated, ...

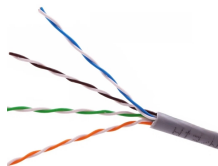


DMI Fiber Patch Cable Family

Encore Wire's thermoplastic and/or thermoset single conductors and their subsequent ratings for Cable Tray "CT" use in sizes 1/0 and Larger. The reason the conductors tend to be 1/0 and...



Encore Wire's thermoplastic and/or thermoset single conductors and their subsequent ratings for Cable Tray "CT" use in sizes 1/0 and Larger. The ...



The abbreviation CT stands for Cable Tray and is mostly used in the following categories: Cable, Tray, Product, Power, Manufacturer. Whether you're exploring these categories or simply seeking a quick ...



TC (tray cable, per NEC Article 336, UL 1277) is a versatile cable suitable for use in cable trays, raceways and even direct burial (if specifically rated). TC can be used for power, lighting ...



The document provides specifications for CT perforated cable trays and fasteners, including dimensions, weights, and ordering codes for various widths. It also outlines available fittings, such as bends and ...



EzyStrut CT cable trays are a perforated tray system offering premium strength and performance for both commercial and industrial installations.



CT Wire - Cable Tray, or CT wire, is a single conductor wire that is size 1/0 or bigger. Cu Conductor - Copper conductors, sometimes seen written as Cu conductors, are the standard wires ...



EAE Cable Tray System product E-Line CT is being manufactured as a hot dipped product that is used in heavy or medium duty application with its perforated design.



CT cable tray system CT cable trays are available in different heights and designs, from premium to basic. We have several vertical models. Discover our different solutions and don't hesitate to contact ...

## Contact Us

For more information, pricing, or custom solutions, please contact us:

Website: <https://samastersbaseball.co.za>

Email: [sales@samastersbaseball.co.za](mailto:sales@samastersbaseball.co.za)

Phone: +27 63 874 2095

Address: 15 Innovation Drive, Technopark, Stellenbosch, 7600, South Africa

This document is for informational purposes only. Specifications subject to change without notice.

