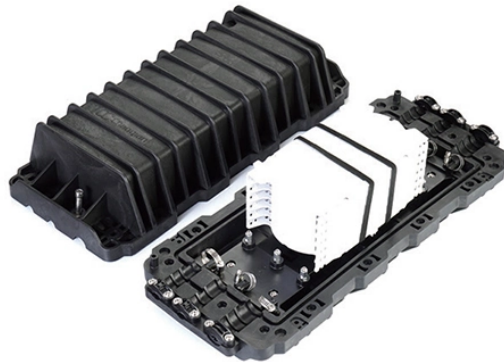


# What does 10E optical module mean



## Overview

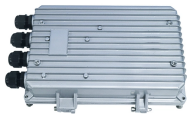
A 10GBASE-ER SFP module is a long-reach 10Gbps fiber optic transceiver designed to transmit data over single-mode fiber up to 40km, making it a key solution for extended Ethernet links beyond standard campus or data center distances. Compared with short-reach and long-reach 10G SFP+ optics. AI readiness comprises six pillars: Strategy, Infrastructure, Data, Governance, Talent, and Culture. Is your organization AI ready?

Build the bridge between business outcomes and technology with our new interactive tool. Provide outsourced IT and consulting services with a broad technology. High-speed data transmission in enterprise and data center networks is driven by 10G optical modules. Choosing the proper SFP+ module, whether it be SR, LR, or ER, can have significant impacts on performance, reliability, and costs. Their interface types are LC duplex and comply with IEEE802.3ae, SFF-8472, and SFF-8431 standards.

## What does 10E optical module mean



SFP modules are defined by their “Small” form factor, but the interface determines what you can actually plug into them. In the SFP world, there are three main interface standards you must know.



Both do and does are present tense forms of the verb do. Which is the correct form to use depends on the subject of your sentence. In this article, we'll explain the difference between do ...



Among the many SFP module types available, SFP 10G SR, LR, ER, and ZR stand out as some of the most commonly used. Understanding the distinctions between these SFP modules is crucial for ...



Definition of does verb in Oxford Advanced Learner's Dictionary. Meaning, pronunciation, picture, example sentences, grammar, usage notes, synonyms and more.



DOES definition: a plural of doe. See examples of does used in a sentence.



Master "Do vs Does" with this easy guide! Learn the rules, see real examples, and practice with our comparison chart. Perfect for Everyone.



Stop guessing between do vs. does! Learn the easy rules for questions, negatives, and emphasis with our 10-second subject-verb chart.



These industry standard small, modular optical interface transceivers offer a convenient and cost effective solution for the adoption of 10 Gigabit Ethernet in data center, campus, metropolitan area ...



We've put together a guide to help you use do, does, and did as action and auxiliary verbs in the simple past and present tenses.



Examples of "does" in a sentence does These examples have been automatically selected and may contain sensitive content that does not reflect the opinions or policies of Collins, or its parent ...



DOES meaning: 1. he/she/it form of do 2. he/she/it form of do 3. present simple of do, used with he/she/it. Learn more.



10G SR, LR, ER, and ZR modules are respectively for short, medium, long, and ultra-long distance applications, and are important basic components for building efficient and stable ...



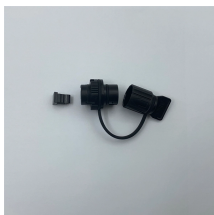
A 10GBASE-ER SFP module is an extended-reach 10Gbps optical solution designed for stable single-mode fiber links up to 40km, making it a practical choice for long-distance Ethernet deployments ...



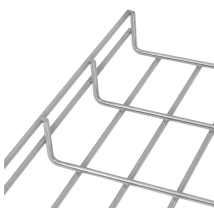
The meaning of DOES is present tense third-person singular of do; plural of doe.



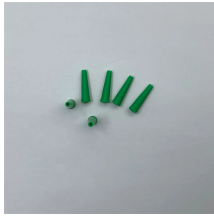
The optical module serves as a crucial component in optical fiber communication systems, operating at the physical layer, which is the lowest layer in the OSI model. Its primary ...



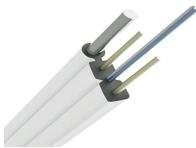
SFP+ SR, LR, and ER Modules explained: key differences, fiber compatibility, distances, case study, and tips for choosing and deploying reliable 10G networks.



SFP 40GBASE modules are advanced optical transceivers designed to support high-speed 40 Gigabit Ethernet (40GbE) connections in modern data centers and high-performance computing networks.



An eSFP module is an SFP module that supports monitoring of voltage, temperature, bias current, transmit optical power, and receive optical power. Therefore, eSFP is also called SFP sometimes.



The 10G SFP+ dual-fiber series optical modules include SR, LRM, LR, ER, and ZR modules. Their interface types are LC duplex and comply with IEEE802.3ae, SFF-8472, and SFF ...



Learn how to use do and does with simple rules, clear examples, and real sentence practice for questions and negatives.

## Contact Us

For more information, pricing, or custom solutions, please contact us:

Website: <https://samastersbaseball.co.za>

Email: [sales@samastersbaseball.co.za](mailto:sales@samastersbaseball.co.za)

Phone: +27 63 874 2095

Address: 15 Innovation Drive, Technopark, Stellenbosch, 7600, South Africa

This document is for informational purposes only. Specifications subject to change without notice.

