

Virtual VLAN Configuration on Core Switches



Overview

This article will guide you in creating different types of Virtual Switches on your Hyper-V host and configuring VMs to use the newly created Virtual Switches according to your requirements. The steps provided apply to Windows Server 2022, Windows Server 2019, and Windows Server 2016. This article describes the various VLAN tagging methods used with ESXi. 212, Commercial Computer Software, Computer Software Documentation, and Technical Data for Commercial Items are licensed to the U.S. Government. If you plan to configure many VLANs on the device and to not enable routing, you can set the Switch Database Management (SDM) feature to the Access template. Basic & Advanced Catalyst Layer 3 Switch Configuration: Creating VLANs, InterVLAN Routing (SVI), VLAN Security, VTP, Trunk Link, NTP Configuration. sections in this chapter include: Arista switches support industry standard 802.1Q.

Virtual VLAN Configuration on Core Switches



SVI or so called Switch Virtual Interface is a kind of Layer 3 gateway for any VLANs in the switched network. If we talk about Cisco switch, SVI is a kind of virtual interface on Cisco switch and ...



How to setup VLANs, InterVLAN routing (ip routing) via Switch virtual interfaces (SVI), restrict VLAN access, Virtual Trunk Protocol (VTP) server and more.



People preparing for Cisco exams need to learn what is Cisco Switch Virtual Interface (SVI). Here is explanation of SVI and simple configuration example.



OverviewPrerequisitesCreate a virtual switchManagement Operating System sharingVirtual LAN (VLAN) identificationNext stepThis article shows you how to create and configure your virtual switch using Hyper-V Manager or Pow...For more information about how you can set up your networking infrastructure with Windows Server, review the Networking documentation. See more on learn.microsoft Usage exampleNew-VMSwitch -name ExternalSwitch -NetAdapterName Ethernet -AllowManagementOS \$trueSee more on Microsoft DocsFeedbackThanks!Tell us more.
.sb_doct_txt{color:#82c7ff}hpe



Learn how to configure multiple VLANs in Hyper-V using Virtual Switch Manager for network segmentation and secure VM traffic isolation.



Before you create VLANs, you must decide whether to use VLAN Trunking Protocol (VTP) to maintain global VLAN configuration for your network.



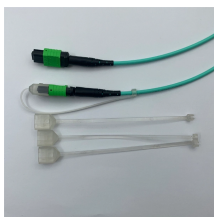
Before you create VLANs, you must decide whether to use VLAN Trunking Protocol (VTP) to maintain global VLAN configuration for your network.



Learn how to create and configure a virtual switch for use by the Hyper-V host and guest virtual machines.



It is intended for administrators responsible for installing, configuring, and managing Aruba switches on a network. Updates to this document can occur after initial publication. For the latest versions of ...



How to setup VLANs, InterVLAN routing (ip routing) via Switch virtual interfaces (SVI), restrict VLAN access, Virtual Trunk Protocol (VTP) server and ...



Issue/Introduction This article describes the various VLAN tagging methods used with ESXi.



This configuration includes the switch port access VLAN, switch port mode (trunk or access), trunk-allowed VLANs, the trunk native VLAN, and the switch port trunk groups.



To assign a VLAN for a particular Hyper-V virtual switch you can use the following command: The hypervisor I am running is a Hyper-V Server 2019. You can still use the classic Hyper ...

Contact Us

For more information, pricing, or custom solutions, please contact us:

Website: <https://samastersbaseball.co.za>

Email: sales@samastersbaseball.co.za

Phone: +27 63 874 2095

Address: 15 Innovation Drive, Technopark, Stellenbosch, 7600, South Africa

This document is for informational purposes only. Specifications subject to change without notice.

