

Uses of cable trays in Western Europe



Overview

According to DIN EN 61537, a cable support system is used to support and house cables. The system allows the use of electrical resources in electrical installations and/ or in communication systems. Since 1964, the company has supplied high-quality solutions for industrial cable management in energy, infrastructure, and plant engineering sectors. Strong and durable – Made of hot-dip galvanized steel or stainless steel, suitable for indoor and outdoor applications. Fast installation – Reduce installation costs with quick and efficient. Strong in production, optimisation and consulting for cable support systems Trayco's solar shelter kits: assemble your PV inverters at lightning speed! Discover the new Trayco catalogue! Request your new product catalogue and dive into our extensive range of cable support systems! Get more info on. While ensuring cables are neatly arranged, cable trays provide necessary protective measures to avoid potential safety hazards, thereby extending the lifespan of cables.

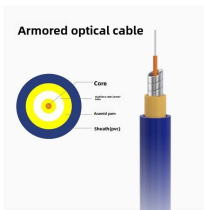
Uses of cable trays in Western Europe



Discover the top industrial applications for metal cable trays, from petrochemical plants to renewable energy facilities. Learn how these trays enhance safety, efficiency, and compliance in ...



Cable trays for industrial and marine use. Includes distribution trays, cable routes and NATO-type models. Request a quote directly via our webshop.



Specifies requirements for metal cable trays and associated fittings designed for use in accordance with the rules of Canadian Electrical Code, Part I and the National Electrical Code®



Below, we will highlight the practical applications of cable trays in various industries to showcase their diverse functions and key value in supporting modern commercial and industrial activities.



These are cable management systems composed of trays, mounting support systems, direction changing parts, connection parts and fittings with the purpose of carrying and fixing cables safely in ...



Cable trays are used as an alternative to open wiring or electrical conduit systems, and are commonly used for cable management in commercial and industrial construction.



Four different mesh cable tray types are available, depending on the requirements, area of application and cable quantity. The innovative Magic connection system of the GRM and G-GRM mesh cable ...



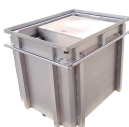
Trayco is specialised in producing and optimising 100% Belgian ...



Trayco is specialised in producing and optimising 100% Belgian cable trays, mesh trays, cable ladders, mounting and floor systems. We also play an important role as advisor and guide ...



This guide covers cable ladder systems, cable tray systems, channel support systems and associated supports intended for the support and accommodation of cables and possibly other electrical ...



Our profiles are compatible with all cable tray and cable ladder types, guaranteeing perfect alignment, stability, and load distribution. The system is suitable for both industrial and infrastructure ...

Contact Us

For more information, pricing, or custom solutions, please contact us:

Website: <https://samastersbaseball.co.za>

Email: sales@samastersbaseball.co.za

Phone: +27 63 874 2095

Address: 15 Innovation Drive, Technopark, Stellenbosch, 7600, South Africa

This document is for informational purposes only. Specifications subject to change without notice.

