

Use of horizontal junction boxes



Overview

You use a junction box to route cables, create splices, and terminate connectors safely while keeping wiring tidy and serviceable. Learn what the NEC requires for junction boxes, from box fill calculations and grounding to outdoor use and fire-rated wall installations. Though small, this box plays a vital role in protecting circuits from damage, simplifying maintenance, and preventing electrical. Pull boxes, junction boxes, and conduit bodies must be sized to allow conductors 4 AWG and larger to be installed without damage to the conductor insulation. The NEC provides sizing requirements in 314.

Use of horizontal junction boxes



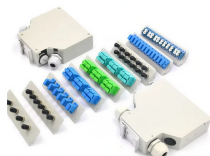
Explore the essential role of a junction box in residential and commercial electrical systems. Learn its uses, key features, and installation tips for safe wiring.



Explore the essential role of a junction box in residential and commercial electrical systems. Learn its uses, key features, and installation tips ...



What is a junction box used for in commercial applications today? How can you find a junction box that aligns with the needs of your application? Ahead, we'll talk about some of the most ...



Because a junction box electrical enclosure shields conductors from dust and moisture, it reduces faults and improves fire safety. It also creates a stable mounting point for accessories such as switches, ...



They provide exceptional durability and are perfect for scenarios like industrial settings or outdoor applications where robustness is essential. These ...



Learn what the NEC requires for junction boxes, from box fill calculations and grounding to outdoor use and fire-rated wall installations.



Learn about the many common types of wall and ceiling electrical boxes for switches, outlets, light fixtures, ceiling fans, and junction boxes.



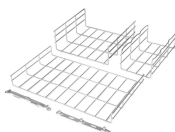
Learn how to install a junction box safely, from choosing the right box and mounting it correctly to making secure splices and following basic code-safe practices.



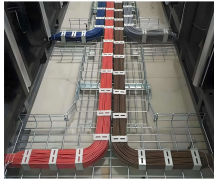
Taking the mystery out of sizing pull boxes and junction boxes. Pull boxes, junction boxes, and conduit bodies must be sized to allow conductors 4 AWG and larger to be installed without damage to the ...



They provide exceptional durability and are perfect for scenarios like industrial settings or outdoor applications where robustness is essential. These boxes are appropriate for locations that ...



Unlock the essentials of junction boxes with Vorlane's guide on types, uses, and installation tips for safe and efficient electrical setups.



Learn what a junction box is used for, how it protects wire connections, and why it's essential for electrical safety in homes, buildings, and industries.

Contact Us

For more information, pricing, or custom solutions, please contact us:

Website: <https://samastersbaseball.co.za>

Email: sales@samastersbaseball.co.za

Phone: +27 63 874 2095

Address: 15 Innovation Drive, Technopark, Stellenbosch, 7600, South Africa

This document is for informational purposes only. Specifications subject to change without notice.

