

## Trough-type vertical cable tray diagram



## Trough-type vertical cable tray diagram



Please click the appropriate link below to view the catalog section as a PDF.



Where cable tray wiring systems with current carrying conductors are installed in a dust environment, ladder type cable trays should be used since there is less surface area for dust buildup than in ...



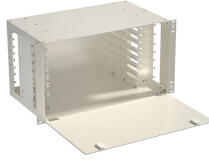
If it has excellent electrical continuity and is integrated in the installation's equipotential bonding system, a metal cable tray reduces the coupling's impact and thus contributes to good EMC of the electrical ...



This guide covers the critical steps, from selecting the right electrical cable tray and performing accurate cable fill calculations to managing a safe cable pull through and ensuring all bonding and grounding ...



Cable tray length is selected based on the load to be supported, the distance between the supports (also referred to as the span), and handling and installation constraints.



Using a unique joining method that mechanically locks components together without fasteners or heat, this wiring trough ships completely assembled to save both time and labor. Designed for indoor use, ...



The Ladder Tray features light, rugged, tubular steel construction. It is designed for mechanical support and strain relief in long runs of cable and creates a smooth gradual bend for cable. Rail and stringer ...



Trough tray can be cut to length with a reciprocating saw fitted with a fine metal cutting blade. Mark three sides of the tray using a square and make allowances to keep mounting hole slots in position for ...



Mounting Bracket Instructions: ) Use to mount Trough Tray to a wall or perpendicular surface. ) 3/8" Or 1/2" mounting hardware by others. ) Fasten tray to wall mounted strut support (hardware by others).



Eaton's submittal builder tool for B-Line series cable ladder and tray allows you to easily filter, select and download straight section, fitting and accessory submittals.



Cablofil steel trough trays provide the strength and security required when then need to limit cable access is of primary importance.

## Contact Us

For more information, pricing, or custom solutions, please contact us:

Website: <https://samastersbaseball.co.za>

Email: [sales@samastersbaseball.co.za](mailto:sales@samastersbaseball.co.za)

Phone: +27 63 874 2095

Address: 15 Innovation Drive, Technopark, Stellenbosch, 7600, South Africa

This document is for informational purposes only. Specifications subject to change without notice.

