

The hanging rod for fixing the distribution box



The hanging rod for fixing the distribution box



Connecting Threaded Rod to Unistrut Channel 4 Ways. Fixed; Through Channel; Hanging; Angled Hanging; Below, we'll go over in a little more detail, the four most common ways ...



Learn how to install a distribution box safely and correctly. Covers wiring, placement, standards, and expert tips for a compliant setup.



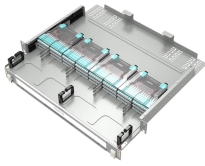
I encountered a box in the ceiling space that looks like the photo; wondering if it violates the code. The closest article might be 314.23 but it doesn't state about the threaded rods.



General Technical Particulars for LT Distribution Boxes : - The L.T. Distribution Boxes should be of the dimensions as per the drawing & details in the table furnished.



In a pendant installation, there are two locations where support is needed. One point is where the cord or cable originates and connects to the branch circuit conductors overhead, and the other point is ...



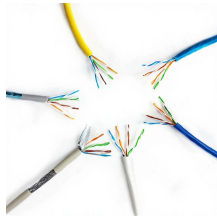
Use this CADDY Heavy-Duty Electrical Box Hanger to secure an electrical box suspended from the ceiling. Includes a box-mounting clip.



Widely used: Specifically designed for PE30 distribution boxes, distribution cabinets, and lighting fixtures, ground rods are strategically installed atop buildings to offer reliable and effective ...



How to install the splitter distribution box is the important information we need to know. This article includes the following:



Adjustable length box bar hangers can adjust from 16" through 24" and are designed for non-standard stud spacing. These box supports are compatible with 1-1/2" and 2-1/8" deep boxes and are made of ...



Connecting that threaded rod to Unistrut can seem tricky, but it's rather straightforward. Here are four of the most common ways to connect Unistrut to threaded rod, depending on the ...



In outdoor environments, ensuring that a waterproof distribution box remains steady against wind or vibration depends on the integrity of the connection between the support plate and the fixed ...



Open-mounted distribution box installation method: Assemble four bolts into the four holes on the corners and tighten them into the expansion pipes to fix the box.

Contact Us

For more information, pricing, or custom solutions, please contact us:

Website: <https://samastersbaseball.co.za>

Email: sales@samastersbaseball.co.za

Phone: +27 63 874 2095

Address: 15 Innovation Drive, Technopark, Stellenbosch, 7600, South Africa

This document is for informational purposes only. Specifications subject to change without notice.

