

The function of explosion-proof plugs in distribution boxes



Overview

They are designed to contain internal explosions and prevent ignition of surrounding flammable gases or dust. In this article, we will explore three key aspects: certification standards, material selection, and application-specific design considerations. The in-page Table of Contents is available only when multiple sections are being viewed. (b) Short-circuit protection shall be provided for each branch circuit connected to a distribution box. These panels are specially designed to contain explosions and prevent flames or sparks from escaping the. Explosion proof box, also called explosion proof boxes, include but not limit to explosion proof electrical boxes, explosion proof switch, explosion proof light switch, flameproof on off switch, limit switch explosion proof, explosion proof junction box, stainless steel junction box, ex proof. Explosion-proof electrical equipment, such as explosion-proof distribution boxes, is specifically designed for hazardous environments where flammable gases, vapors, or dust may be present.

The function of explosion-proof plugs in distribution boxes



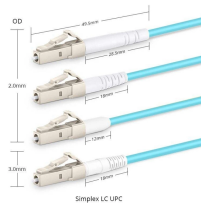
These panels are specially designed to contain explosions and prevent flames or sparks from escaping the enclosure. In industries such as oil and gas, chemical processing, mining, and pharmaceuticals, ...



Explosion-proof distribution boxes often require special cables designed to prevent sparks or electric arcs from escaping the box. Explosion-proof distribution boxes ...



To mitigate explosion hazards, explosion-proof electrical distribution boxes are essential, guaranteeing compliance with rigorous electrical standards and enhancing mining safety.



Explosion proof distribution boxes and electrical enclosures are critical components for ensuring safety in hazardous environments. They are designed to contain internal explosions and ...



How Ex d and Ex e Protection Actually Work
Explosion protection techniques prevent ignition of flammable gases, vapors, mists, or dusts in industrial settings. Two primary methods, Ex d ...



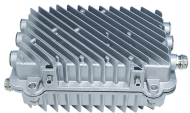
The function of explosion proof box depend on the electrical components installed such as switch, terminal blocks, circuit breaker, buttons, indicators, plug-in contact.



Explosion-proof distribution boxes often require special cables designed to prevent sparks or electric arcs from escaping the box. Explosion-proof distribution boxes come with terminal blocks for ...



Explosion-proof distribution panels are vital components in hazardous industrial environments, ensuring safety by preventing electrical equipment from igniting flammable gases or dust. These panels are ...



The main function of the explosion-proof distribution box is to ensure the normal operation of electrical equipment in flammable and explosive environments and to prevent explosion ...



(b) Short-circuit protection shall be provided for each branch circuit connected to a distribution box. The current-carrying capacity of the specified connector shall be compatible with the automatic circuit ...



§ 18.42 Explosion-proof distribution boxes. (a) A cable passing through an outside wall (s) of a distribution box shall be conducted either through a packing gland or an interlocked plug and ...



The function of explosion proof box depend on the electrical components installed such as switch, terminal blocks, circuit breaker, buttons, indicators, plug-in contact.

Contact Us

For more information, pricing, or custom solutions, please contact us:

Website: <https://samastersbaseball.co.za>

Email: sales@samastersbaseball.co.za

Phone: +27 63 874 2095

Address: 15 Innovation Drive, Technopark, Stellenbosch, 7600, South Africa

This document is for informational purposes only. Specifications subject to change without notice.

