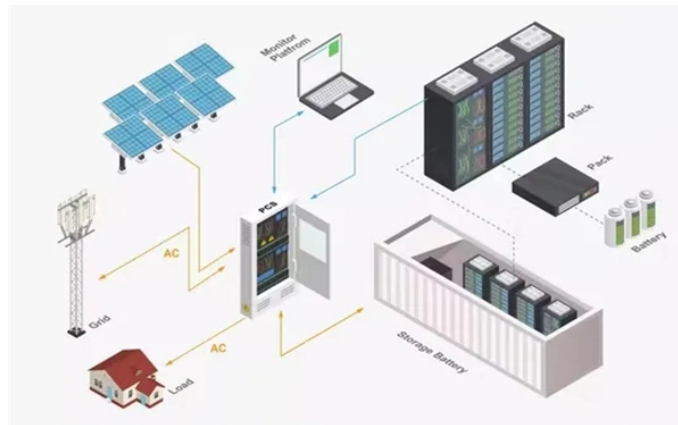


# The access switch can also connect to other switches



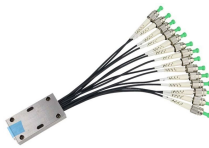
## Overview

End devices connect to the LAN through the access switches. An access switch is a network edge device that directly connects end-user hardware such as computers, IP phones, wireless access points, cameras, and IoT devices to the broader network. The access layer provides initial connections to end users. When designing a campus LAN, you may choose to implement all, some, or none of the Cisco three-layer model's recommendations. It assists mainly in the switching of incoming and outgoing data packets to the right destination, as specified in MAC. Each layer is served by specialized switches, with the access switch connecting end-user devices, the distribution switch aggregating traffic and enforcing policies, and the core switch acting as the high-speed backbone.

## The access switch can also connect to other switches



An access switch connects directly to endpoint devices such as desktop computers, VoIP phones, Wi-Fi access points, security cameras, and IoT sensors. It also connects upstream to a ...



Switches in this layer are called access switches. End devices connect to the LAN through the access switches. In other words, an access switch forwards traffic between connected ...



I have an old catalyst switch and I want to connect these 2 switches together. One of them will be used as core and the second will be used as access sw. Normally I do it on new switches easily.



The core switch is the backbone of your network. It's the most important piece of equipment because it connects all your other switches and routes traffic between them. The access ...



OM3 Fiber Patch Cable Family

In this lesson, we will learn to configure a multilayer switch (also called Layer 3 switch) to perform inter-VLAN routing, which was previously done using an actual router.



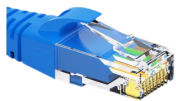
While access switches provide end-device connectivity, distribution switches aggregate traffic and enforce policies, and core switches form the high-speed backbone.



In the access layer, multiple access switches can be added. Since the access layer is the most accessed layer of the hierarchy network, switches must be capable of switching and routing data ...



In this lesson, we will learn to configure a multilayer switch (also called Layer 3 switch) to perform inter-VLAN routing, which was previously done using an actual ...



Access switches can also act to manage and control data flows on the network by incorporating features such as VLAN, which helps organize different types of network traffic within ...



Access switches can also act to manage and control data flows on the network by incorporating features such as VLAN, which helps organize different ...



When a user sends data, it travels from their device to an access switch, up to a distribution switch, possibly through the core to another distribution switch, and finally down to ...



Start with a powerful managed access switch that supports PoE and VLANs. In many cases, this switch can serve a "collapsed core" role, connecting directly to your firewall/router.

## Contact Us

For more information, pricing, or custom solutions, please contact us:

Website: <https://samastersbaseball.co.za>

Email: [sales@samastersbaseball.co.za](mailto:sales@samastersbaseball.co.za)

Phone: +27 63 874 2095

Address: 15 Innovation Drive, Technopark, Stellenbosch, 7600, South Africa

This document is for informational purposes only. Specifications subject to change without notice.

