

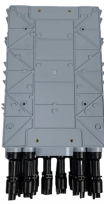
Techniques for threading thick cables through cable trays



Techniques for threading thick cables through cable trays



Let's take a closer look at the significance of managing cables in cable trays, the fundamental principles, methods, and steps required for effective implementation, as well as a case ...



Double splice is only for tray depths 4" and larger. Splice Kit is utilized on all sizes of tray. Ground Splice is utilized along with the "NoSplice" line of WBT supports. It is the quickest way to attach tray to ...



This document deals with cables trays, cables and connector installation and segregation, cable trays earthing and E.M.C. directives. These rules shall be applied in the cabling engineering workflow for ...



This guide covers cable ladder systems, cable tray systems, channel support systems and associated supports intended for the support and accommodation of cables and possibly other electrical ...



For connections between pipes, and between pipes and junction or distribution boxes, threading is necessary at the pipe ends. For welding steel pipes, threading ...



Cable or “P” clamps and plastic tie wraps are used to fasten cables/conductors to the ladder tray. Single conductors must be fastened to prevent excessive movement generated by fault current magnetic ...



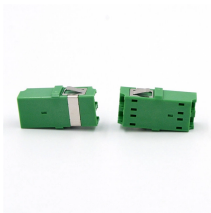
The document provides guidelines for installing cable in cable trays, including design considerations and formulas for calculating maximum tensions, sidewall pressures, bending radii, and more.



As per the NEC, the maximum allowable rung spacing is 9 inches (230 mm) when cable tray carries single-conductor cables of 1/0 to 4/0 AWG (American Wire Gauge) (Appendix I).



Our cable tray design considerations guide details key factors to consider when designing cable tray systems for industrial and commercial applications. Browse or download the cable tray catalog for ...



The maximum allowable pulling tension that can be applied safely to a cable varies with the size and material of the conductor, the number of cables, ...



It should be mounted far enough off the floor or roof to allow the cables to exit through the bottom of the cable tray. If a strut is used for this purpose, mount the strut directly to the floor or roof and attach the ...



Route cables through conduits or trays - Follow the designed layout. Adjust tension - Avoid over-tightening or leaving cables too loose. Final inspection - Ensure no cracks, bends, or ...

Contact Us

For more information, pricing, or custom solutions, please contact us:

Website: <https://samastersbaseball.co.za>

Email: sales@samastersbaseball.co.za

Phone: +27 63 874 2095

Address: 15 Innovation Drive, Technopark, Stellenbosch, 7600, South Africa

This document is for informational purposes only. Specifications subject to change without notice.

