

Techniques for Connecting Equipment to Distribution Boxes



Overview

Check for proper IP/NEMA ratings and material quality. Ensure safe placement: install in dry, accessible areas with good ventilation and at appropriate height (typically ~1. Practice good wiring: secure grounding, neat cable management, proper insulation, and correct wire gauge. In this article, you will find information about connecting inverter to distribution box: essential safety tips, step-by-step guidance, and common mistakes that often lead to inverter failure, so that you can avoid them. Last Updated on September 17, 2025 by June The most extensive use of inverter. In modern electrical systems, cable distribution boxes (also known as electrical distribution boxes or distribution boxes) play a crucial role as the key hub for managing, distributing, and protecting circuits. Whether you're a professional or a DIY enthusiast, understanding the correct procedure can prevent accidents and ensure optimal performance. This article mainly talks about the first one. An electrical distribution box, also known as a power distribution box, panelboard, or consumer unit. In practical applications, there are many electrical connection methods for industrial power distribution boxes, which will be introduced below. A busbar is a large-section conductive.

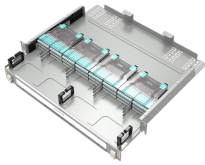
Techniques for Connecting Equipment to Distribution Boxes



Box installation: Make sure that Distribution box has been correctly installed and fixed. Material preparation: Prepare the required circuit breakers, wires, wiring ties and other materials, and ...



In short, there are many types of electrical connection methods for boxes, and different connection methods have their own advantages, disadvantages and scope of application.



Install distribution box systems with essential hand tools like screwdrivers and pliers, plus power tools such as drills and impact drivers for efficient setup.



Witness the precise and professional wiring techniques of German experts as they connect distribution boxes. Learn about their meticulous process, from cutting and crimping wires to ...



Learn how to install a distribution box safely and correctly. Covers wiring, placement, standards, and expert tips for a compliant setup.



METHOD STATEMENT FOR Electric panel and distribution box installation and termination - Free download as PDF File (.pdf), Text File (.txt) or read online for free. This document provides a method ...



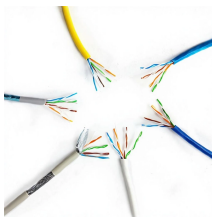
First of all, you need to have a simple understanding of the definition of a distribution box, and make it clear which kind of distribution box you want to install. This is important to properly install it.



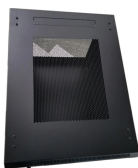
In this article, you will find information about connecting inverter to distribution box: essential safety tips, step-by-step guidance, and common mistakes that often lead to inverter failure, so that you can ...



Reliable cable distribution boxes ensure safe, efficient power management for residential, commercial, and industrial systems. Learn installation and safety tips.



Install distribution box systems with essential hand tools like screwdrivers and pliers, plus power tools such as drills and impact drivers for efficient setup.



Learn how to connect a distribution box with this easy-to-follow, step-by-step guide. From tools and materials needed to common installation mistakes and solutions, this comprehensive article will ...

Contact Us

For more information, pricing, or custom solutions, please contact us:

Website: <https://samastersbaseball.co.za>

Email: sales@samastersbaseball.co.za

Phone: +27 63 874 2095

Address: 15 Innovation Drive, Technopark, Stellenbosch, 7600, South Africa

This document is for informational purposes only. Specifications subject to change without notice.

