

## Switchgear Wiring



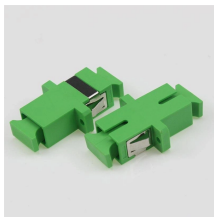
## Switchgear Wiring



In an electric power system, a switchgear is composed of electrical disconnect switches, fuses or circuit breakers used to control, protect and isolate electrical equipment.



Within this article, we will be talking about wiring diagrams inside medium voltage (MV) switchgear. Basically, the same rules and principles apply here as well.



This blog serves as a complete guide to control and power wiring in switchgear panels, explaining their differences, importance, best practices, applications, and maintenance tips.



in the interconnection diagram. The interconnection symbol will appear, however, on the connection diagram as an indication that there is a continuation of the circuit



Drawing types vary in the level of details they communicate the required information. Typically, the drawing types include a single-line diagram, AC schematics, DC schematics, logic ...



The wiring diagram provides complete information about the connection of the components, and the reference table shows the numerical values of voltage, current, and resistance ...



This blog serves as a complete guide to control and power wiring in switchgear panels, explaining their differences, importance, best practices, applications, and ...



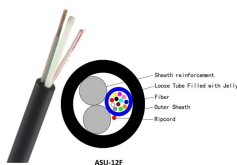
By following this detailed process, clearly assigning responsibilities, and using the correct tools and safety practices, switchgear installation can be completed efficiently and safely.



This will ensure the diagram is accurate and complete. To get started, you'll need to first identify the type of switchgear you're using. From there, you'll need to establish the size and type of ...



By following this detailed process, clearly assigning responsibilities, and using the correct tools and safety practices, ...



Electrical switchgear refers to a centralized collection of circuit breakers, fuses and switches (circuit protection devices) that function to protect, control and isolate electrical equipment.



Switchgear controls and protects electrical equipment. Learn the basics of switchgear, types of electrical switchgear, how they differ from switchboards, and how to help your switchgear your last longer.

## Contact Us

For more information, pricing, or custom solutions, please contact us:

Website: <https://samastersbaseball.co.za>

Email: [sales@samastersbaseball.co.za](mailto:sales@samastersbaseball.co.za)

Phone: +27 63 874 2095

Address: 15 Innovation Drive, Technopark, Stellenbosch, 7600, South Africa

This document is for informational purposes only. Specifications subject to change without notice.

