

Specifications of Communication Cable Tray Support Arms



Specifications of Communication Cable Tray Support Arms



The installation drawings are to include, as a minimum, plan-view layouts of cable tray routing including locations of supports, cable tray junction and installation details, cable tray grounding details, and ...



Usually, specifications. a detailed description or assessment of requirements, dimensions, materials, etc., as of a proposed building, machine, bridge, etc. a particular item, aspect, calculation, etc., in ...



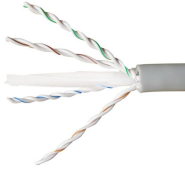
Definition of Specification in the Definitions dictionary. Meaning of Specification. What does Specification mean? Information and translations of Specification in the most comprehensive ...



Cable Support Systems are well designed to provide necessary support for cable trays, cable ladders and trunkings. Cable supports are manufactured according to common standards from high quality ...



a. specifications A detailed, exact statement of particulars, especially a statement prescribing materials, dimensions, and quality of work for something to be built, installed, or manufactured.



Definition of specification noun from the Oxford Advanced Learner's Dictionary. a detailed description of how something is, or should be, designed or made. The house has been built exactly to our ...



Support your cable trays with Vantrunk Tray Cantilever Arms (TCA). Designed for tray widths from 50mm to 900mm, featuring M10 and M6 clearance holes for ...



Specifications, or specs, are the requirements, standards, and characteristics a product or material must meet. They serve as the single source of truth across design, manufacturing, and compliance.



Supports shall be constructed from 12 gauge steel formed shape channel members 1-5/8 inch by 1-5/8 inch with necessary hardware such as the Trapeze Support Kits T200E as manufactured by US Tray ...



It specifies the requirements and testing for cable support systems, which are intended to support and house cables, as well as other electrical resources in electrical installations or communication systems.



Professional-grade cantilever support arm specifically designed for cable tray installations. Features a welded flat mounting plate construction for secure attachment. Manufactured by nVent CADDY, this ...



This document provides specifications for various brackets used to support struts, including: - Dimensions, load ratings, safety factors, finishes, and weights for 14 ...



We all need to be working from the same set of specifications. Those specs cover everything from default settings for screen resolutions to more standard ways to work with modems.



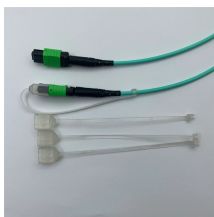
The drawings which constitute a part of these specifications indicate the general route of the cable tray systems. Data presented on these drawings is as accurate as preliminary surveys and planning can ...



NEMA VE 1-2017 Specifies requirements for metal cable trays and associated fittings designed for use in accordance with the rules of Canadian Electrical Code, Part I and the National Electrical Code®



SPECIFICATION definition: the act of specifying. See examples of specification used in a sentence.



Support your cable trays with Vantrunk Tray Cantilever Arms (TCA). Designed for tray widths from 50mm to 900mm, featuring M10 and M6 clearance holes for secure fixing.



The meaning of SPECIFICATION is the act or process of specifying. How to use specification in a sentence.



Some applications may require the cable tray to support the weight of a single, dead object in addition to the cable loads. Specifications typically require this to be applied at the midpoint of the span between ...



Work covered in this section consists of the furnishing of all necessary labor, supervision, materials, equipment, and services to completely execute the cable runway system as described in this ...



Install cable trays as a complete system, including fasteners, hold-down clips, support systems, barrier strips, adjustable horizontal and vertical splice plates, elbows, reducers, tees, crosses, cable ...



Cable tray length is selected based on the load to be supported, the distance between the supports (also referred to as the span), and handling and installation constraints.



Specifications are a type of technical standard that may be developed by any of various kinds of organizations, in both the public and private sectors.



a statement or enumeration of particulars, as to actual or required size, quality, performance, terms, etc. specifications for a new building

Contact Us

For more information, pricing, or custom solutions, please contact us:

Website: <https://samastersbaseball.co.za>

Email: sales@samastersbaseball.co.za

Phone: +27 63 874 2095

Address: 15 Innovation Drive, Technopark, Stellenbosch, 7600, South Africa

This document is for informational purposes only. Specifications subject to change without notice.

