

## Specifications for Distribution Boxes for Real Estate Users

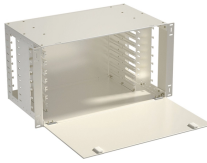


### Overview

Distribution boxes are typically made of reinforced concrete with plumbing “knock outs” into the box. The inlet must be higher than the outlets, with all outlets at the same level. 2 requires outdoor distribution boxes to have rain-tight enclosures when installed in wet locations, but many installers mistakenly specify NEMA 3 (weather-resistant) instead of NEMA 3R or 4 (rain-tight), leading to inspection failures and costly retrofits. What is. Dispensing brochures is essential for real estate. That's why, we carry a variety of flyer dispensers that help advertise your property listings and make your contact information easily accessible to interested clients. Our full line of Outdoor Brochure Boxes, Brochure Boxes on Mounting Stake. To help us meet this commitment, we organize our sustainability strategy around five core tenets: Growing Green, Living Well, Giving Back, Doing Right, and Building Worth. Easily display your flyers, manuals, spec sheets, safety documents, event details or real estate literature anywhere! Some styles have a business card pocket attached. Brochure box and metal stake are pre-mounted and ready to. We manufacture and stock Distributions Boxes in various sizes from 3 outlets to 14 outlets: American Distribution Boxes are made of high-density

polyethylene for years of dependable use. Inlet and outlet elevations are positioned to provide equal distribution and meet most local codes.

## Specifications for Distribution Boxes for Real Estate Users



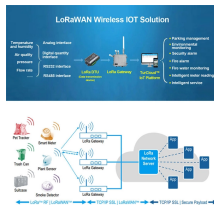
Complete specification guide for outdoor electrical distribution boxes covering NEC Article 312 requirements, NEMA ratings, sizing calculations, and selection criteria for commercial and ...



We manufacture and stock Distributions Boxes in various sizes from 3 outlets to 14 outlets:



Our Distribution Panels are designed to act as the feeder to smaller temporary power boxes, or are wired for powering large equipment. Either a larger three phase generator or other source may ...



The correct installation of distribution boxes requires proper planning and careful construction techniques. The location of the box(es) and associated plumbing, as well as the required elevations, ...



In this article, we'll tell you everything you need to know about USPS mailbox regulations, covering apartment mailboxes, cluster mailboxes, and commercial mailboxes. Why Does USPS Care ...



Discover how E-Abel customizes electrical distribution boxes to meet unique requirements for industrial, commercial, and residential applications. Learn about our design, ...



Explore our selection of outdoor brochure boxes designed for real estate professionals. Keep your flyers safe and visible in any weather with our durable brochure boxes.



Check out American Manufacturing Company's DISTRIBUTION BOXES for water & wastewater systems. Learn more about the product details and specifications.



Free standing outdoor Brochure Boxes are mounted to our 48" metal stake. Easily display your flyers, manuals, spec sheets, safety documents, event details or real estate literature anywhere!



The materials covered under this Specification shall comply with the requirement of the latest version of the following standards as amended up to date, except where specified otherwise.

## Contact Us

For more information, pricing, or custom solutions, please contact us:

Website: <https://samastersbaseball.co.za>

Email: [sales@samastersbaseball.co.za](mailto:sales@samastersbaseball.co.za)

Phone: +27 63 874 2095

Address: 15 Innovation Drive, Technopark, Stellenbosch, 7600, South Africa

This document is for informational purposes only. Specifications subject to change without notice.

