

Single-phase distribution box grounding



Single-phase distribution box grounding



Single-phase transformers would ground the grid, so existing single phase transformers were replaced with three phase transformers and the single phase loads were connected phase-to-phase.



Each Power Circuit Breaker or Power Transformer having a bushing Voltage Transformer on the tank shall have the Voltage Transformer provided with a separate ground lead, independent of the ...



In general, the solidly-grounded system is the most popular, is required where single-phase phase-to-neutral loads must be supplied, and has the most dependable phase-to-ground voltage characteristics.



First, we review and compare medium-voltage distribution-system grounding methods. Next, we describe directional elements suitable to provide ground fault protection in solidly- and low ...



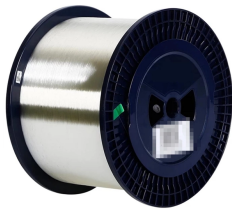
Whether you're a seasoned pro or just starting out, this comprehensive guide will give you practical insights into proper grounding techniques, with a special focus on how selecting quality materials ...



It is recommended to ground the neutral at various strategic locations in distribution substations, overhead lines and underground cables, distribution transformers, and all loads.



It is absolutely necessary to implement efficient grounding in distribution systems in order to guarantee the safety, dependability, and performance of the electrical network.



A single phase distribution box controls and protects home or office circuits. Learn its definition, main parts, and how it ensures electrical safety.



In this review paper, based on the summary and analysis for the research status, the flexible grounding system is systematically classified according to its control strategy and structure.



The most common type of short circuit on the multi-grounded wye distribution system is the phase-to-ground fault. This can occur either on three-phase feeders or on single-phase tap lines.

Contact Us

For more information, pricing, or custom solutions, please contact us:

Website: <https://samastersbaseball.co.za>

Email: sales@samastersbaseball.co.za

Phone: +27 63 874 2095

Address: 15 Innovation Drive, Technopark, Stellenbosch, 7600, South Africa

This document is for informational purposes only. Specifications subject to change without notice.

