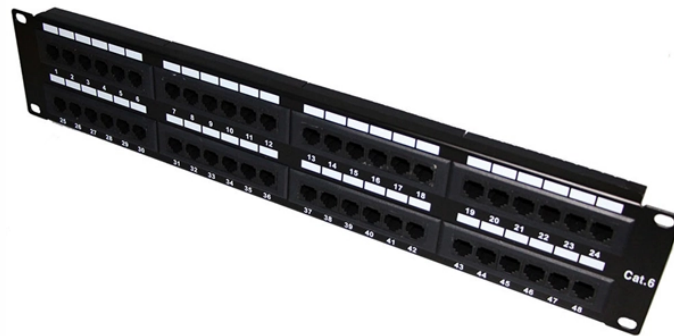


# Should cable trays with troughs be covered



## Overview

Are trough-type cable trays fully enclosed?

They are typically enclosed or semi-enclosed and can be fitted with covers for full protection. This guide covers the critical steps, from selecting the right electrical cable tray and performing accurate cable fill calculations to managing a safe cable pull through and ensuring all bonding and grounding requirements are met. For licensed electricians, mastering these principles is essential. The use and installation of cable trays is covered by legally enforceable OSHA regulations in 29 CFR 1910. 305(a)(3), or comparable standards promulgated by States operating OSHA-approved State plans. In addition, this document contains several references to provisions of the National Electric Code. It protects cables from dust and light debris. It is good for routing control cables and communication cables. The solid bottom can help reduce electromagnetic interference (EMI). Adding a lid makes it even more protective.

## Should cable trays with troughs be covered



In vertical or angled tray runs, cables should be fastened to the tray's transverse members to keep them secure. In horizontal runs, the weight of the cables often keeps them in place, ...



From a design standpoint, trough trays emphasize continuous cable support while maintaining moderate structural strength. They occupy a middle ground between ladder trays and ...



This guide is written to help you understand when trough type cable trays are the right choice, how they are designed, how to specify them correctly, and how they perform in real ...



Cablofil steel trough trays provide the strength and security required when then need to limit cable access is of primary importance.



Unlike a simple wire trough, which is typically a covered channel for shorter runs, cable trays provide a comprehensive support system for complex wiring paths over long distances.



The choice of method should be discussed with a local inspector. The best decision may be to extend only the cables, creating a discontinuity in the cable tray.



Confused about cable management? Learn the differences between Trough Cable Tray, Solid Bottom Cable Tray, and Cable Trunking. We simplify cable support for you.



It provides rules for acceptable wiring methods that can be installed in cable trays, including conditions for use. It addresses uses permitted and not permitted for cable trays.



For ladder or ventilated trough trays, the diameter of all cables 4/0 and larger must be added together, and the total must not exceed the inside width of the cable tray.



A generic guideline developed by the Cable Tray Institute indicates that cable trays should not be filled in excess of 40-50% of the inside area of the tray or of the tray's maximum weight based on the cable ...

## Contact Us

For more information, pricing, or custom solutions, please contact us:

Website: <https://samastersbaseball.co.za>

Email: [sales@samastersbaseball.co.za](mailto:sales@samastersbaseball.co.za)

Phone: +27 63 874 2095

Address: 15 Innovation Drive, Technopark, Stellenbosch, 7600, South Africa

This document is for informational purposes only. Specifications subject to change without notice.

