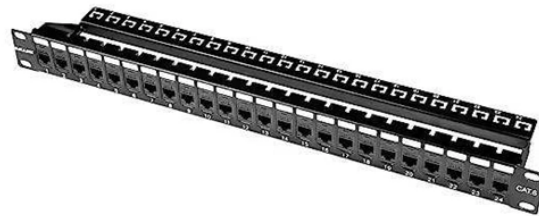


Setting parameters for electrical distribution boxes at construction sites in Mongolia



Setting parameters for electrical distribution boxes at construction



Restore power to the installation area by turning on the electrical circuit at the main panel. Test each circuit breaker or fuse by switching it on and off to verify proper operation. Use a voltage tester or ...



The Electrical Installation Guide is dedicated to professionals who design, install, ...



The Electrical Installation Guide (wiki) has been written for electrical professionals who must design safe and energy efficient electrical installation, in compliance with international ...



Our expertise includes fault detection, system upgrades, and compliance with industry standards to optimize power distribution and minimize downtime, tailored to meet the demanding requirements of ...



This electrical installation handbook, however, aims to supply, in a single document, tables for the quick definition of the main parameters of the components of an electrical plant and for the selection of the ...



BS 7671, “Requirements for Electrical Installations” is published by the Institution of Engineering and Technology and BSI, it governs all domestic electrical installations (and many other types).



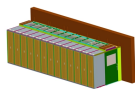
The installation requirements and specifications of Distribution box involve many aspects, including site selection, fixing method, wiring specifications and safety protection.



The installation requirements and specifications of Distribution box involve many aspects, including site selection, fixing method, wiring specifications ...



There are several common mistakes that should be avoided when setting up the power distribution system on a construction site. One of the most common mistakes is using inferior or damaged cables ...



Master the key quality control methods for electrical riser & distribution box installation. Ensure safety, compliance, and prevent hazards in building electrical systems.



The Electrical Installation Guide is dedicated to professionals who design, install, inspect, and maintain low to medium-voltage electrical installations in compliance with International Electrotechnical ...



Flush-mounted breaker box solutions for Mongolia's electrical installations, offering reliable power distribution and space-efficient integration for modern buildings.

Contact Us

For more information, pricing, or custom solutions, please contact us:

Website: <https://samastersbaseball.co.za>

Email: sales@samastersbaseball.co.za

Phone: +27 63 874 2095

Address: 15 Innovation Drive, Technopark, Stellenbosch, 7600, South Africa

This document is for informational purposes only. Specifications subject to change without notice.

