

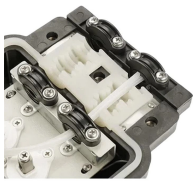
Ring network switch with 2 optical and 8 electrical components and PoE



Ring network switch with 2 optical and 8 electrical components and



BL168GMP-SFP is a managed industrial PoE switch with 2 gigabit optical and 8 ...



The energy-efficient NGS8C2POE 8-Port Gigabit L2 Web-Smart Managed PoE+ Network Switch features eight twisted-pair RJ45 Gigabit Ethernet ports that support auto-negotiable ...



BL168GMP-SFP is a managed industrial PoE switch with 2 gigabit optical and 8 gigabit PoE ports, meeting FCC, CE, and RoHS standards. It supports Layer 2 protocols for stable communication. ...



Ring Network Gigabit PoE Switch is a flexible solution to increase efficiency and stability for power and network transmission in the long distance PoE networking system.



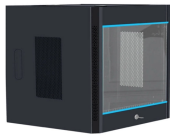
AI intelligent button: Fast ring network RUN Ring technology is adopted. When the main network transmission link fails, the system automatically switches to the backup link, and the fault recovery ...



With its reliable design and ease of use, the product is a great choice for integrating networks consisting of network devices such as IP cameras and wireless access points between ...



It incorporates advanced ITU-T G.8032 ERPS (Ethernet Ring Protection Switching) technology, Spanning Tree Protocol (802.1s MSTP), and dual power input system into customer's industrial ...



PLANET IGS-5225-8P2T4S L2+ Industrial Managed PoE+ Switch, featuring 8 10/100/1000BASE-T 802.3at PoE+ ports with each port powering up to 36 watts, two 10/100/1000BASE-T ports and two ...



Main Features - Redundant Ring IES82162MH-S-RP supports redundant ring and features strong, rapid self-recovery capability to prevent interruptions and external intrusions.



The energy-efficient NGS8C2POE 8-Port Gigabit L2 Web-Smart ...



This gigabit industrial ring switch is equipped with 2 gigabit SFP optical fiber interfaces and 8 gigabit Ethernet electrical ports. It supports plug-and-play functionality and has ring network capabilities.



The Simplified Optical Ethernet solution adopts point-to-point transmission and provides a more reliable independent optical transceiver design. The high-quality signal transmission is free from external ...

Contact Us

For more information, pricing, or custom solutions, please contact us:

Website: <https://samastersbaseball.co.za>

Email: sales@samastersbaseball.co.za

Phone: +27 63 874 2095

Address: 15 Innovation Drive, Technopark, Stellenbosch, 7600, South Africa

This document is for informational purposes only. Specifications subject to change without notice.

