

Replacing the distribution box with an explosion-proof socket



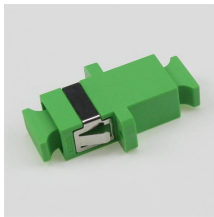
Overview

Below, we will discuss the correct wiring methods for an explosion-proof distribution box and highlight key usage precautions. STAHL's plugs and sockets and plug connectors can be used to conduct, connect and distribute electrical energy without the risk of explosion. Offering a wide variety of products, this is one of the most extensive ranges on the. These explosion proof junction boxes / terminal boxes, plugs, sockets & connectors are for use in explosive atmospheres in compliance with the ATEX 94/9/EC Directive and IEC GR Type Conduit Outlet Box, Explosion-Proof, Dust-Ignitionproof, Malleable Iron, Unilet, GRT Hub Type. Includes: Internal Ground Screw and O-Ring, Internally Threaded Surface Cover with 3. These devices block sparks and heat that could cause explosions.

Replacing the distribution box with an explosion-proof socket



AKRON FOUNDRY CO.



HARDO explosion-proof plugs and sockets: maximum safety in the harshest industrial environments. The construction made of stainless steel or flame-retardant plastics ensures high resistance to ...



Discover SUREALL's ATEX-approved explosion proof plug & socket solutions for heavy industry. Dust-proof, corrosion-resistant receptacles. Contact us for pricing!



Explosion Proof Junction Box / Connectors These explosion proof junction boxes / terminal boxes, plugs, sockets & connectors are for use in explosive atmospheres in compliance with the ATEX 94/9/EC ...



Explosion-proof plugs and sockets ensure safe, certified connections in hazardous areas. Learn key features, standards, and selection tips for your facility.



Innovative and versatile plugs and sockets from R. STAHL for hazardous areas: User friendly, safe without making compromises and suitable for worldwide use.



Discover SUREALL's ATEX-approved explosion proof plug & socket solutions for heavy industry. Dust-proof, corrosion-resistant receptacles. Contact us for pricing!



Crouse-Hinds series AGP17 ATEX and IECEx explosion-protected distribution boards and control assembly are designed for MCB distribution of lighting circuits, heating circuits, socket distribution ...



That's where explosion-proof distribution boxes become the unsung heroes of industrial safety. These aren't just metal boxes; they're meticulously engineered fortresses designed to contain potential ...



When installing and wiring an explosion-proof distribution box, it is essential to follow strict safety protocols and national electrical standards (e.g., IEC, NEC, or local safety regulations). Below are ...



When installing and wiring an explosion-proof distribution box, it is essential to follow strict safety protocols and national electrical standards (e.g., IEC, NEC, or local ...

Contact Us

For more information, pricing, or custom solutions, please contact us:

Website: <https://samastersbaseball.co.za>

Email: sales@samastersbaseball.co.za

Phone: +27 63 874 2095

Address: 15 Innovation Drive, Technopark, Stellenbosch, 7600, South Africa

This document is for informational purposes only. Specifications subject to change without notice.

