

## Relay protection is unaffected by system oscillations

10G to 10G

High speed cable



SFP(Package)

LC(Interface type)

Com.(Case Temperature)



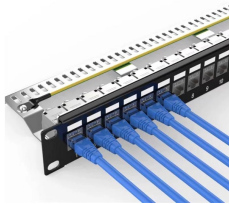
## Relay protection is unaffected by system oscillations



An essential part of electrical systems, a protection relay is responsible for spotting anomalies such as voltage fluctuations, short circuits, and overcurrent.



The document discusses relay protection for power systems. It covers: 1) The tasks of a relay protection system including disconnecting faulty parts, sustaining safe ...



Different disturbances in power system could affect relay behavior and may result in relay misoperation or unintended operation. This paper explores various aspect of the performance analysis of existing ...




This work will characterize and evaluate the impact of stable and unstable power swings on a wide range of protection functions in protection relays.

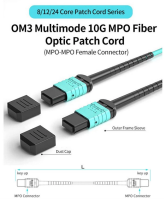


Relay protection is the discipline of designing schemes that detect faults, coordinate relays, and isolate equipment without outages. It emphasizes selectivity, coordination, fault response, and system ...


**More durable and robust**  
 The outer layer is made of environmentally friendly PVC which is soft and elastic. It can be stretched without damage - so you can use it with confidence.




Since regular power system protection relays are designed to operate based only on fundamental frequency components, they are generally oblivious to SSO conditions. Specially designed relaying ...




Distance relays, also known as impedance relay, differ in principle from other forms of protection in that their performance is not governed by the magnitude of the current or voltage in the protected circuit ...




Because the protection areas of the interlocking-based protection concept are not overlapping and because they do not reach into the protection area of the next relays in the protection chain, a ...



Relay curves show only the time for the relay itself to operate and do not include additional time required to trip and clear the fault. The relay curve is shown as the dark blue line.



These courses describe the fundamental concepts of electric system protection and provides detailed examples of the application of relaying. In most cases, the material is based on electro-mechanical ...



The ability of the electric power system to regain a state of operating equilibrium after being subjected to disturbances such as faults, line switching, load rejection, loss-of-excitation, and loss of generation.



In this paper, electromechanical wave oscillation propagation is modeled, and its impact on different power system protective relays, such as overcurrent, distance, and out-of-step relays is ...

## Contact Us

For more information, pricing, or custom solutions, please contact us:

Website: <https://samastersbaseball.co.za>

Email: [sales@samastersbaseball.co.za](mailto:sales@samastersbaseball.co.za)

Phone: +27 63 874 2095

Address: 15 Innovation Drive, Technopark, Stellenbosch, 7600, South Africa

This document is for informational purposes only. Specifications subject to change without notice.

