

## Red indicator light on the lighting distribution box



## Red indicator light on the lighting distribution box



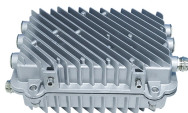
Observe any deviating country-specific electrical installation standards and regulations and seek advice from a local electrician addition, observe more current safety instructions and regulations for the ...



Connect the NO contact terminal of the contactor with the Red indication lamp as shown in the below figure.



In a ceiling junction box where a light fixture is mounted, the red wire is the hot wire from the wall switch. The red wire is typically coated in brown or red insulation and is responsible for ...



Sticky fault on the channel. Check for tripped circuit breaker. Sticky Fault - an indicator that a fault has occurred that will stay until the indicator has been cleared manually.



Various head styles and five colors clearly indicate different working conditions. The luminescent body adopts pure color super bright LED chip, with pure color and lifetime up to 100,000 hours. The ...



Various head styles and five colors clearly indicate different working ...



LED signal indicator lamp designed for electrical distribution boards, automation cabinets, control panels, and various technical installations. This indicator lamp allows the status of an electrical ...



Use this quick reference to decode common LED status patterns on self-diagnostic / automatic-testing emergency light fixtures and follow a simple, field-tested sequence to clear faults fast.



Red fuse LED on. This is caused by a blown or missing fuse. It can also be caused by a malfunctioning fuse or if the fuse connections are loose. The Lynx Distributor measures the voltage over each fuse. ...



The red indicator illuminates to show that the surge protection capability has been compromised, even though the outlet may still supply power. The receptacle is now functioning as a ...



Indicator Lights for electrical panels and power distribution units.

## Contact Us

For more information, pricing, or custom solutions, please contact us:

Website: <https://samastersbaseball.co.za>

Email: [sales@samastersbaseball.co.za](mailto:sales@samastersbaseball.co.za)

Phone: +27 63 874 2095

Address: 15 Innovation Drive, Technopark, Stellenbosch, 7600, South Africa

This document is for informational purposes only. Specifications subject to change without notice.

