

# Rectification of network switch cabinets



## Overview

A Comm's room re-fit is carried out in a 5 step process Step 1 - FREE site survey following initial telephone conversation. Step 2 - Identification and tagging of all equipment and cables within the cabinet (s). It looks better—but more importantly, it works better. Common infrastructure problems that slow down troubleshooting and create instability Patch panels & switches → slow troubleshooting, guesswork during. HomeNetworking is a place where anyone can ask for help with their home or small office network. New comments cannot be. Any tools to help or just lots of sticky labels and spend hours tracing each cable and stick the same label et each end of the patch lead, if so any good labelling ideas or just use whatever avery labels you can find lying around to stick in the cables For me, I get an excel spreadsheet and draw my. Often time pressures demand that procedures are short circuited and things get out of hand before you know it. If the answer to any of the below is YES: Does your patch field look like a plate of spaghetti?

Do you have trouble tracing patch cords?

Are the patch panel and switch ports obstructed?

Do. I had configured a cisco L3 switch interface G1/0/1 with "switchport trunk encapsulation dot1q" in my IT room, which was connected to a L2 switch which had a pc and a DHCP server, which was providing IP's to entire office network. I by mistake configured the same interface i.

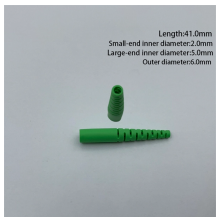
## Rectification of network switch cabinets



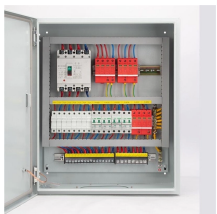
This topic covers the procedure used to correct a network problem caused by a hardware failure. Correcting network problems caused by configuration error or traffic overload are beyond the scope ...



Power cables for your equipment need to be run separately inside your network cabinet and server enclosures so that they are out of the way. This helps ensure that they cannot be ...



As businesses grow and expand the network infrastructure has to be flexible. Our network cabinet rationalisation service, or tidy-up, can bring order from chaos, and return data cabinets back ...



I had configured a cisco L3 switch interface G1/0/1 with "switchport trunk encapsulation dot1q" in my IT room, which was connected to a L2 switch which had a pc and a DHCP server, which ...



I have included a current network map, as well as potential maps for options two and three. I've also included a physical layouts of the cabinets as they are currently. It's not something ...



We use a Linux-based opensource tool called Cacti with a plugin called MacTrack. It polls the mac address tables of the switches such that I can see the mac and IP address of what is ...



Reorganization of my On-Q cabinet, including patch panel, 16 port managed POE switch, and pushed almost all coax out of my life. Placed unmanaged gigabit switches in 3 rooms and applied Ethernet ...



To start with you have more cables than switch ports, which means you have to budget for more switches. You also have multiple styles of patch panel, which means your employer has had ...



From a simple re-patching and/or auditing exercise to a full overhaul with a new layout of open racks (as shown below), cabinets and management. Having carried out hundreds of successful Comms room ...



We re-patch, label, repair ports, dress fibres, and bring switches back to best-practice. It looks better—but more importantly, it works better.

## Contact Us

For more information, pricing, or custom solutions, please contact us:

Website: <https://samastersbaseball.co.za>

Email: [sales@samastersbaseball.co.za](mailto:sales@samastersbaseball.co.za)

Phone: +27 63 874 2095

Address: 15 Innovation Drive, Technopark, Stellenbosch, 7600, South Africa

This document is for informational purposes only. Specifications subject to change without notice.

