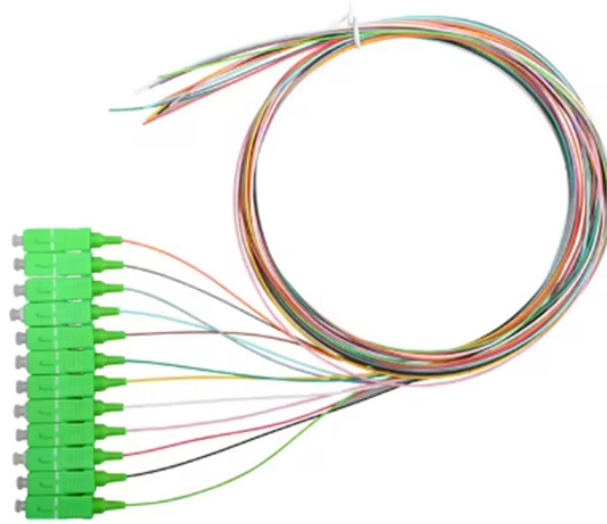


Pulse Relay Protection



Overview

This guide presents practical circuit solutions to help prevent unintended activation or deactivation, with a focus on time and impulse relay configurations. In industrial settings, one well-known safety method is the two-hand start system. Pulse [®] is the rear-end collision deterrent that rapidly brightens and dims your third brake light 4 times when you press the brake pedal. This guide explores pulse relays in detail, highlighting how they work. **WARNING:** Identifies information about practices or circumstances that can cause an explosion in a hazardous environment, which may lead to personal injury or death, property damage, or economic loss. **ATTENTION:** Identifies information about practices or circumstances that can lead to personal injury. Response Time (Single-Suitable for applications up to PLe, SIL 3 Per ISO13849-1 Stop Category 0 and Stop Category 1 One or two dual-channel inputs Two or three safety contacts CI:One auxiliary contact Cross-fault monitoring Rotary switch configures auto/manual or monitored manual reset Same rotary. Power System Protective Relays: Principles & Practices Protective Relays - Technical Seminar Nov 2016 - Copyright: IEEE 1 Power System Protective Relays: Principles & Practices Presenter: Rasheek Rifaat, P.

Eng, IEEE Life Fellow IEEE/IAS/I&CPSD Protection & Coordination WG Chair
Jacobs Canada. FPC 400 is a family of current or voltage digital
protectionrelays with easy to use interface meant for variety of solutions in
industry and power distribution. Direct and pulsating voltage or current relay
Wall mounting Bidirectional.

Pulse Relay Protection



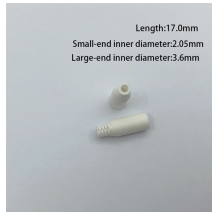
This research focuses on conducted pulse testing of digital protective relays in a power substation and their associated high-voltage circuit breaker circuit and instrumentation transformer circuits.



The NJMC1 is a mechanical bistable relay that changes its contact position each time a control pulse is received, maintaining its state even after power loss — ideal for energy-saving switching control.



Included in the product line are pulse isolation, pulse totalizing and pulse conditioning relays; fiber optic and wireless pulse links; and other relay circuit assemblies that ...



Flexible AND/OR logic can be configured simply in a single relay or through a combination of relays via single-wire connection. The family includes a module designed specifically for guardlocking ...



Solid State Instruments provides modular and self-contained low voltage pulse relays to protect electrical equipment from transient voltage spikes. Our pulse relays extend product life by protecting ...



Protective relays and devices have been developed over 100 years ago to provide “lastline” of defense for the electrical systems. They are intended to quickly identify a fault and isolate it so the balance of ...



Find your pulse protection relay easily amongst the 3 products from the leading brands (SIEMENS, Iskra, IME, ...) on DirectIndustry, the industry specialist for your professional purchases.



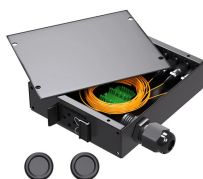
Safety relays use pulse testing of inputs and outputs to verify that the safety function is performed when called upon. Pulse testing for the inputs must be used with devices with mechanical contacts like E ...



Model MSR-011 is a bistable interval relay with self-holding and is thus suitable for an interval circuit, for example for pump control. Design and construction of the contact protection relay satisfy VDE re ...



Pulse ® is the rear-end collision deterrent that rapidly brightens and dims your third brake light 4 times when you press the brake pedal. (The cycle bursts of light do not repeat upon any subsequent ...



Explore the energy-efficient pulse relay technology used in automation, lighting, and security systems. Featuring CHINT's NJMC1 relay for reliable performance.

Contact Us

For more information, pricing, or custom solutions, please contact us:

Website: <https://samastersbaseball.co.za>

Email: sales@samastersbaseball.co.za

Phone: +27 63 874 2095

Address: 15 Innovation Drive, Technopark, Stellenbosch, 7600, South Africa

This document is for informational purposes only. Specifications subject to change without notice.

