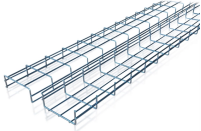


Price of 24-core ODF patch panel for Danish operator backbone network



Price of 24-core ODF patch panel for Danish operator backbone network



Description Rack mounted patch panel is designed for fiber connection and distribution of backbone fiber cable; it is suitable for fiber splicing, storage and ...



The ODF patch panel is suitable for optical cable installation, bare fibers splicing and protection, and pigtails storage and management. It provides an efficient and organized way to manage your fiber ...



Our patch panels are manufactured to exceed IEC, TIA/EIA, and RoHS standards, ...



There different models to fit for 12 core fiber, 24 core fiber, 36 core fiber, 48 core fiber, 72 core fiber, 96 core fiber, 144 core fiber applications. They can be with different adapter interface including the SC, ...



As a manufacturer of fiber management solutions, we supply this 24-core ODF patch panel for high-density environments. The 1U rack-mount design saves space while providing organized fiber ...



This rack-mounted patch panel is compatible with both 19" racks, made of cold rolled steel sheet, electrostatic spraying, provide 12 to 48 single and double adapter, available for SC, FC, ST and ...



ODF-R24 is with standard 19 inch size and properly designed to control the bend radius of the cable inside the enclosure to avoid extra optical loss. Its front mark on the plates is easy for identification ...



Description Rack mounted patch panel is designed for fiber connection and distribution of backbone fiber cable; it is suitable for fiber splicing, storage and protection. Their standard 19" width make them ...



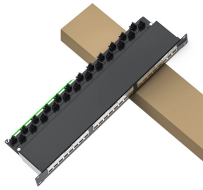
The 19" standard cabinet installation rack is equipped with an integrated unit box for optical fibre fusion and distribution, with safe and reliable optical fibre connection. The modular wiring unit design has ...



Find reliable 24 port ODF prices from top suppliers. Quality fiber optic patch panels for distribution and terminal boxes. Shop now for efficient networking solutions.



Our patch panels are manufactured to exceed IEC, TIA/EIA, and RoHS standards, ensuring durability and performance. We support global B2B clients with customized solutions and reliable supply chains.



This rack-mounted patch panel is compatible with both 19" racks, made of cold ...



Looking for a reliable 24 port fiber panel? Discover top-rated options for high-speed networks. Click to explore features, installation tips, and trusted suppliers today.

Contact Us

For more information, pricing, or custom solutions, please contact us:

Website: <https://samastersbaseball.co.za>

Email: sales@samastersbaseball.co.za

Phone: +27 63 874 2095

Address: 15 Innovation Drive, Technopark, Stellenbosch, 7600, South Africa

This document is for informational purposes only. Specifications subject to change without notice.

