

Power company distribution box removal



Overview

A utility box can often be moved, but it's a homeowner-led process. This guide explains the necessary coordination with your provider for a successful relocation. Moving to a new home?

You're at the right place, make a selection below & get started! What You'll Need To Get Started Ready to begin service at a new address?

Disconnecting service at an address?

Moving from one address to another?

Not sure if you're in our service area?

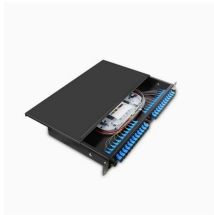
View our Service Area Map. Property owners can request that a power company relocate a line, but the process is formal, slow, and expensive. Expect to file an application with the utility. In this video, the entire power distribution box is removed including electrical connections on the bottom.

Enjoy kind human being of planet Earth.

Power company distribution box removal



In this video, the entire power distribution box is removed including electrical connections on the bottom. Enjoy kind human being of planet Earth.



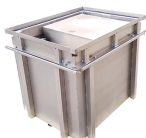
If a power line is in the way of your project, here's how to request a relocation, what it costs, and what to do if the utility says no.



The two power companies around my area do not want to get involved in disconnecting/reconnecting services. A competent/licensed electrician is expected to disconnect and reconnect the power ...



Guidance for starting or stopping SCE service at your home when relocating.



A homeowner who wishes to move a utility box, perhaps for a landscaping project or a new driveway, must submit a formal request to the responsible company. The request should include ...



It is the process of transferring the main electrical distribution panel from one location to another. It involves disconnecting the wiring, removing the panel, and reinstalling it in a new position.



In this article, we go over who is responsible for replacing an electrical meter box and why you need to pay close attention to where the meter box is located.



Disconnecting service at an address? Moving from one address to another? Not sure if you're in our service area? View our Service Area Map. Different people have different needs. That's why we are ...



A utility box can often be moved, but it's a homeowner-led process. This guide explains the necessary coordination with your provider for a successful relocation.



Getting a utility box, such as a pad-mounted transformer, fiber hub, or cable pedestal, relocated from your property is a complex process controlled entirely by the utility provider, not the homeowner.

Contact Us

For more information, pricing, or custom solutions, please contact us:

Website: <https://samastersbaseball.co.za>

Email: sales@samastersbaseball.co.za

Phone: +27 63 874 2095

Address: 15 Innovation Drive, Technopark, Stellenbosch, 7600, South Africa

This document is for informational purposes only. Specifications subject to change without notice.

