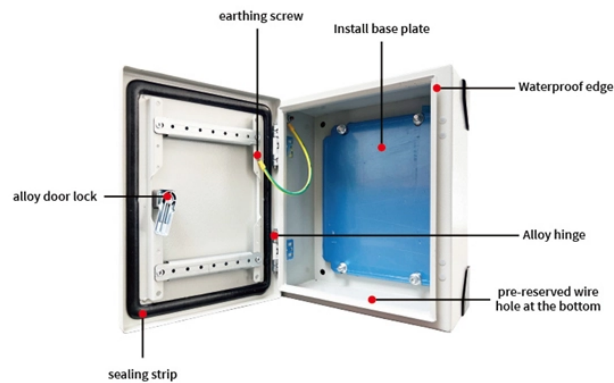


Photovoltaic combiner box circuit breaker tripped



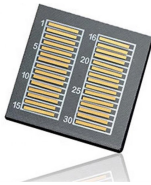
Photovoltaic combiner box circuit breaker tripped



Not only is your breaker super undersized but after you reset the breaker, you need to call Enphase to have them programmatically flip the relay in the system controller so you can start producing again.



We have 2MW site that keeps tripping 2 breakers on the combiner panel. I have been trouble shooting this issue for years. The top 2 breakers in the panel trip during spring and early ...



Circuit breakers can trip mostly due to high current flow, bad quality circuit breakers, wrong circuit wiring, and internal problems with the panels. In some cases, Inverter problems too can trip circuit breakers. ...



Current (amps) makes heat in a breaker. The breaker trips when the bymetal strip in the breaker gets to hot and trips the breaker. Most breakers are...



Protect your homes electrical circuit system with the use of this durable SVOPEs PV Combiner Box Solar Combiner with Fuse Circuit Breaker Lightning Arrester ABS ...



Comprehensive guide to solar combiner box troubleshooting covering 10 common electrical faults. Any doubt please contact LETOP experts today.



1 String Solar PV Combiner Box IP65 Protection Grade & Lightning Protection & Premium ABS Material VOU solar photovoltaic combiner box is a perfect device designed to reduce the connection line ...



I have 4, 100 watt solar panels connected to a combiner box. In the middle of the day the breaker in it with trip. We disconnect one solar panel and that keeps it from tripping but then our ...



I got a 63A transfer switch (interlocked 2-pole breakers) from an eBay vendor out of China, but it started buzzing and I didn't trust it, replaced with a Square-D interlocked breaker box.



When the solar combiner box is grounded incorrectly, it results in electrical faults and equipment damage. Check all the grounding connections and ensure they meet the legal standards.



Combiner Boxes and Breakers Combiner boxes combine the output of multiple solar electric (PV) source input circuits. Combiner boxes are designed for installation near the PV array with each series string ...



DC circuit breakers may trip due to overloads or degrade from age and UV exposure. Replace faulty breakers and ensure your combiner box matches the system's rated current and voltage.

Contact Us

For more information, pricing, or custom solutions, please contact us:

Website: <https://samastersbaseball.co.za>

Email: sales@samastersbaseball.co.za

Phone: +27 63 874 2095

Address: 15 Innovation Drive, Technopark, Stellenbosch, 7600, South Africa

This document is for informational purposes only. Specifications subject to change without notice.

