

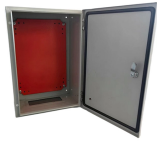
Performance of French Home Electrical Distribution Boxes



Performance of French Home Electrical Distribution Boxes



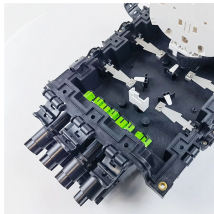
NF C 15-100, also known as the C 15-100 standard, is the French electrical regulation for low-voltage (LV) installations. It sets out the rules imposed on electricians for electrical installations in residential ...



International expert in electrical distribution, Michaud Export designs, develops and implements reliable systems reducing maintenance operations on distribution networks.



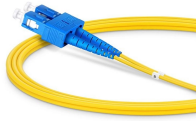
Complete description of a single phase European circuit breaker box/consumer unit, showing electricity entering the residence through the meter, main switch, residual current breakers, ...



En tenant compte de ces facteurs et en suivant ce guide, vous pourrez choisir en toute confiance un coffret de distribution adapté à vos besoins électriques, privilégiant la sécurité et améliorant ...



The document summarizes key aspects of the NF C 15-100 standard on electrical installations for residential buildings in France, including: - Amendments to the standard on minimum ...



Electrical wiring is completely different in France to the UK. Earth size on twin & earth cable and fuse boards are different. We have seen plenty of properties with relatively good electricians, and others, ...



The limitations of total power available from the French electricity supply means that British home owners abroad are often surprised when they install an electric power shower that it ...

GAIN AN IN-DEPTH UNDERSTANDING OF



- ⊙ LED DISPLAY PANEL
- ⊙ PROTECTOR OPERATION BUTTONS
- ⊙ NEUTRAL WIRE OUTPUT TERMINAL
- ⊙ LIVE WIRE OUTPUT TERMINAL
- ⊙ WORKING CURRENT AND VOLTAGE INSTRUCTIONS
- ⊙ FLAME-RETARDANT SHELL

Despite these differences, understanding and installing a French system is well within the capacity of anyone who is competent in the installation of UK systems. This guide starts with the electricity ...



Made in France, these multi-material flush-mounting boxes comply with the RE2020 standard. Bi-injected and with an extra-wide, convex support collar for a better grip, they are perfectly ...



Get the Electricity in your French house manual with AI Chat & PDF download. Learn French electrical rules, EDF regulations & safe installation tips.

Contact Us

For more information, pricing, or custom solutions, please contact us:

Website: <https://samastersbaseball.co.za>

Email: sales@samastersbaseball.co.za

Phone: +27 63 874 2095

Address: 15 Innovation Drive, Technopark, Stellenbosch, 7600, South Africa

This document is for informational purposes only. Specifications subject to change without notice.

