

Parameters of Haiti Plastic Optical Cable Splice Box



Overview

Horizontal Fiber Optic Splice Closure, with metal hoop, dome, vertical type, 4 (4x16mm) inlet or outlet ports, 1~4 trays for bunch fiber or 1~4 trays for ribbon fiber. For bunch fiber - 024 tray (150*105mm) with 12 cores and heat shrinkable protective sleeves, accessories, 460x190mm. (price for. LINK Fiber Optic Splice tray is used in optical distribution frame, distribution box, and splice closures, which is engineered for use with indoor or outdoor splice hardware with both loose tube and tight-buffered optical cable designs. Industry Standard User. AFL's SB01 splice enclosure provides protection from all types of elements. This model has four small circular cable entry ports plus one big circular port for express (looped) cable. The sealing component is made from silicon. It is made of high-impact ABS plastic and is resistant to UV rays, extreme temperatures, and chemicals.

Parameters of Haiti Plastic Optical Cable Splice Box



This page provides the detailed information on Plastic Splice Box (up to 12 cores)



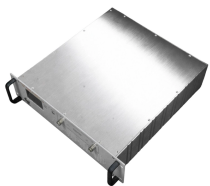
At present, two technologies, fusion and mechanical, can be used for splicing glass optical fibres and the choice between them depends upon the expected functional performance and considerations of ...



The document provides information on optical fibre cable jointing. It discusses the construction of optical fibre cables which typically contain multiple glass or plastic fibres encased in a protective plastic jacket.



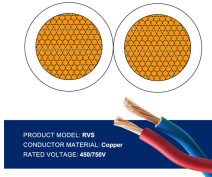
Protect and manage heat shrink style spliced fibers. Heat shrink splice holder and sleeves included. Clear cover allows viewing or inspection of fibers without having to remove cover. Cover can open ...



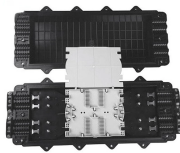
Furnished with four plugged cable ports (2 aluminum and 2 plastic) for either All-Dielectric Self-Supporting (ADSS) or Optical Ground Wire (OPGW) cables, the splice enclosure can be pre ...



Horizontal Fiber Optic Splice Closure, with metal hoop, dome, vertical type, 4 (4x16mm) inlet or outlet ports, 1~4 trays for bunch fiber or 1~4 trays for ribbon fiber.



It is made of high-impact ABS plastic and is resistant to UV rays, extreme temperatures, and chemicals. It features a hinged cover with a snap lock for easy access and a cable entry port with a rubber ...



Unitekfiber's mini FTTH fiber optic terminal box is widely used as a termination point for feeder cable to connect with drop cable. The fiber cable splicing, splitting, distribution can be done in the box, it also ...



Whether you need a compact solution or a more robust outdoor fiber-optic splice enclosure, we've got you covered. Use our solutions with different cable sizes and number of drops.



compacting pressure from the plastic screws (nuts) and the circular plastic hoop. This model is suitable for different methods of branch connection, including branching and splicing of uncut cables. It could ...

Contact Us

For more information, pricing, or custom solutions, please contact us:

Website: <https://samastersbaseball.co.za>

Email: sales@samastersbaseball.co.za

Phone: +27 63 874 2095

Address: 15 Innovation Drive, Technopark, Stellenbosch, 7600, South Africa

This document is for informational purposes only. Specifications subject to change without notice.

