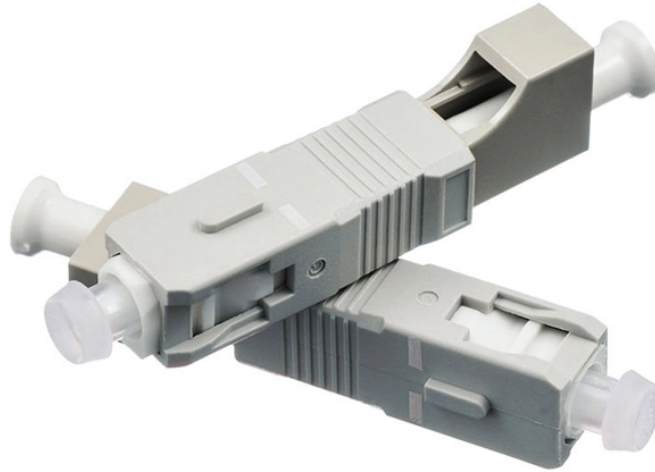


Optical transmitter bias current 200mA



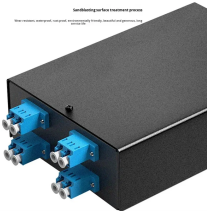
Optical transmitter bias current 200mA



The controller unit changes the phase difference adjustment bias voltage such that a result of synchronous detection by the synchronous detection circuit becomes maximized or minimized.



Laser-diode applications generally require a precisely controlled current to regulate the output power. An adjustable current is advantageous because the laser output-power can shift over temperature. For ...



The proposed APC and AMC demonstrate 5~20-mA of bias-current control and 5~20-mA of modulation-current control, respectively. To enhance the bandwidth of the optical transmitter, an active feedback ...



This application note details how the AFE11612-SEP can be used in a multitude of optical communication applications, such as laser biasing, EML negative bias, and photodiode detection and ...



Features The OPT2145-5. optical transmitter operates using either a single +5 V or -5 V pow. r supply. The device maintains electrical and optical stability over the specified temperature and voltag. ...



In summary, optimizing bias voltage is essential for efficient optical modulator operation, maintenance of signal quality, and meeting performance specifications required for a designated application.



What is the transmitter output bias current (s)?
Question What is the transmitter output bias current (s)? Answer The transmitter output bias current is 150mA max at full output power (2 x 75mA for each ...



In this paper, we propose a deep learning (DL)-based method to automatically classify modulation of orthogonal frequency-division multiplexing (OFDM) signals in wireless communication systems.



as current and a modulation current. The bias current can be thought of as a dc current that sets the operating point in the target region of the LI curve and corresponds to the dc optical power. The ...



The LOG200 is a precision, high-speed, current-to-voltage logarithmic amplifier with integrated adaptive photodiode bias. The device is designed for current measurements across a wide dynamic range of ...



Lasers such as a VCSEL are widely used in optical transceivers. Typically, a laser has a direct current (DC) bias current, which maintains the laser on so that a power up process is not...

Contact Us

For more information, pricing, or custom solutions, please contact us:

Website: <https://samastersbaseball.co.za>

Email: sales@samastersbaseball.co.za

Phone: +27 63 874 2095

Address: 15 Innovation Drive, Technopark, Stellenbosch, 7600, South Africa

This document is for informational purposes only. Specifications subject to change without notice.

