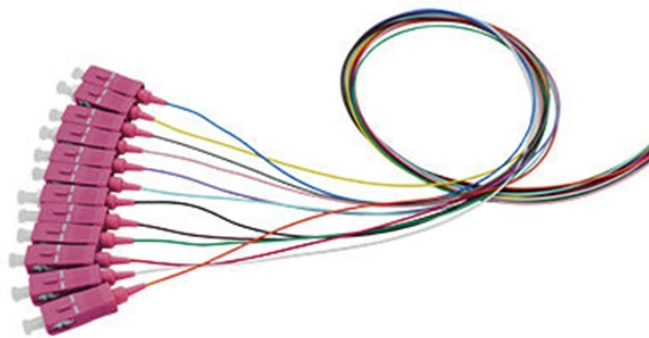


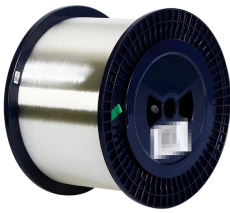
# **Nordic trough-type cable tray elbow**



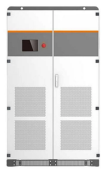
## Nordic trough-type cable tray elbow



Straight sections and fittings provide the flexibility to allow cable ladder installations to follow cable runs which are either planned for new projects or already exist in buildings, as shown in the illustration right.



The I-beam design is the most common cable tray construction. Our aluminum, I-beam ladder cable trays feature 3-inch tangents and are using connectable with our fittings and accessories.




These fittings help in maintaining support of the cable tray system. Shop Graybar's collection of cable tray and fittings to find exactly what works for your job.





Cablofil steel trough trays provide the strength and security required when then need to limit cable access is of primary importance.





So, whether specifying a major new project, or simply refurbishing existing facilities, choose ABB cable tray to deliver the most effective, reliable and long lasting ...


<p style="text-align: center;"><b>OEM/ODM</b> CUSTOMIZATION AVAILABLE</p>  <p>Full product customization    Structure customization Brand customization    Packaging design</p>	<p>Our cable management system is flexible and adaptable to the conditions and needs of each unique project. Regardless of the size of your project, we tailor a solution for you.</p>
--	--

	<p>Fitting and accessories. with the same or different width of the cable run. All fittings are available in sizes and types corresponding to the straight cable tray sections. These fittings include: elbow, ...</p>
---	--

	<p>Our solid bottom trough tray is used to carry smaller instrumentation, data communications, computer, telephone, control and fiber optic cable from one ...</p>
--	--

	<p>MP Husky's cable tray selector for choosing the correct tray type (ladder, solid bottom, perforated, wire mesh) and size based on load, cable type and installation requirements.</p>
---	--

	<p>Using a unique joining method that mechanically locks components together without fasteners or heat, this wiring trough ships completely assembled to save both time and labor. Designed for indoor use, ...</p>
---	---

	<p>These are the most corrosion-resistant tray systems we offer for routing cable and hose in configurations such as curves, slopes, and tees. Cut, bend, and connect the wire mesh trays. They are a lightweight ...</p>
---	---



The cable trays feature slot patterns allowing for optimal and efficient positioning of equipment and easy access for cable ties and other fixings such as tubing clamps.

## Contact Us

For more information, pricing, or custom solutions, please contact us:

Website: <https://samastersbaseball.co.za>

Email: [sales@samastersbaseball.co.za](mailto:sales@samastersbaseball.co.za)

Phone: +27 63 874 2095

Address: 15 Innovation Drive, Technopark, Stellenbosch, 7600, South Africa

This document is for informational purposes only. Specifications subject to change without notice.

