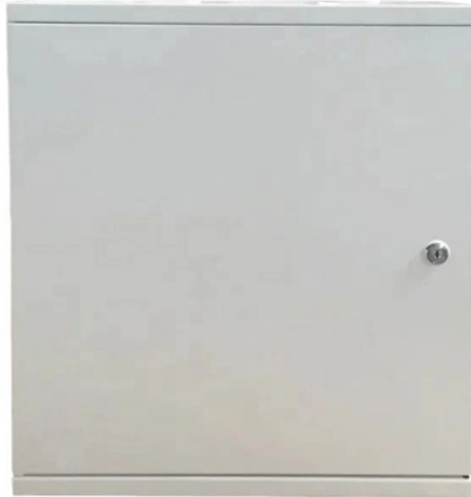


## Nigerian customs cost CFP 2100G



### Overview

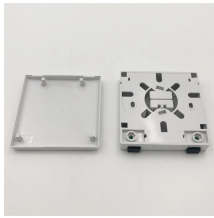
Total customs charges = \$3,527. At an exchange rate of 1,550 Naira per dollar, you would pay approximately 5,467,825 Naira in customs charges. The table below shows common import categories with their typical HS code ranges and applicable duty rates under the ECOWAS Common External. This section contains the entire CET Tariff Sections, which can be consulted online or downloaded in printable format. The online consultation allows navigation through Sections, Chapters, Abbreviations & Symbols, as well as General Rules for interpretation of the Harmonized System. 5%), FCS, ETLs, surcharges, and total landed cost on goods you plan to import into Nigeria. Estimate import duty for up to 10 items. (NGN) Add items and fill parameters to see your multi-item breakdown. Importing into Nigeria isn't just about paying "duty. " It is a collection. Whether you're importing personal items, starting an import business, or just curious about the costs involved, this calculator helps you figure out the total charges you'll face at Nigerian ports and borders. Step 1 What Are You Importing?

Select the item category and enter the value. Rates are based on the

ECOWAS. How much is customs duty in Nigeria?

Customs duty in Nigeria varies depending on the type of goods being imported.

## Nigerian customs cost CFP 2100G



Whether you're importing personal items, starting an import business, or just curious about the costs involved, this calculator helps you figure out the total charges you'll face at Nigerian ports and borders.



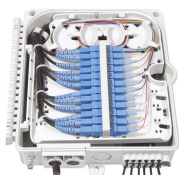
Import duty is calculated by summing up surface duty (% of CIF), surcharge, Financing Customs Services (FCS 4% of CIF), ECOWAS Trade Liberalization Scheme (ETLS 0.5% of CIF), and 7.5% VAT.



Calculate Nigeria Customs duty, FCS, tariffs, and VAT instantly. Accurate 2026 HS Codes and Exchange Rates.



Understanding how to calculate customs duty charges in Nigeria is vital to prevent overpayment and avoid unnecessary delays. With upcoming regulatory changes, businesses must ...



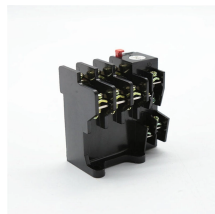
Nigeria import duty calculator tool from SGK Global — estimate customs duty, VAT (7.5%), FCS, ETLS, surcharges, and total landed cost on goods you plan to import into Nigeria.



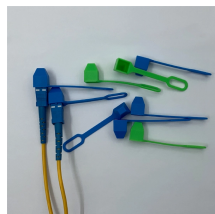
Free Nigeria tariff calculator and customs duty calculator. Estimate import tax, import duties, customs fees, and Nigeria import duty rates instantly.



Nigeria's customs system includes several charges such as import duty, value-added tax (VAT), excise duty, and levies like the ETLs and CISS fee. This calculator helps you quickly determine how much ...



Estimate the total landed cost of importing goods into Nigeria. Enter item category and CIF value to see import duty, VAT, surcharges, and total payable.



The Nigeria Custom Duty Calculator provided here is for informational purposes only. The calculations are based on the rates and inputs provided by the user and may not reflect the exact amount of ...



This section contains the entire CET Tariff Sections, which can be consulted online or downloaded in printable format. The online consultation allows navigation through Sections, Chapters, Abbreviations ...

## Contact Us

For more information, pricing, or custom solutions, please contact us:

Website: <https://samastersbaseball.co.za>

Email: [sales@samastersbaseball.co.za](mailto:sales@samastersbaseball.co.za)

Phone: +27 63 874 2095

Address: 15 Innovation Drive, Technopark, Stellenbosch, 7600, South Africa

This document is for informational purposes only. Specifications subject to change without notice.

