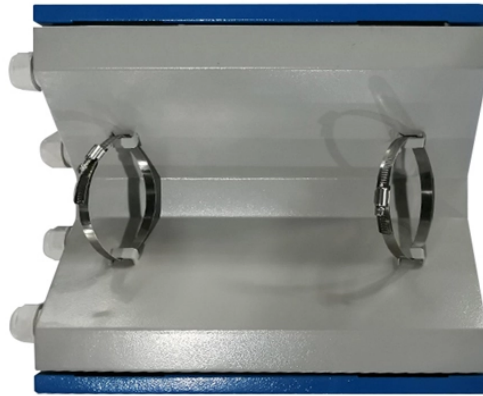
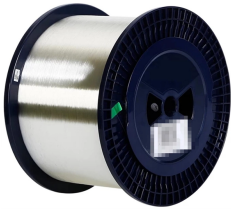


Nicaragua-Bissau PoE Industrial Switch



Nicaragua-Bissau PoE Industrial Switch



We provide a wide range of PoE/PoE+/PoE++ switches with up to 90 W output per port to deliver high-speed data transmission while powering high-power devices over long distances. With an industrial ...



With its DIN-rail mounting capability, wide-temperature operation, IP40-rated enclosure, and LED status indicators, the JXRD024F-AC is a plug-and-play industrial-grade device that provides a reliable and ...



These robust switches are designed for industrial use and are fully compliant with IEEE 802.3, IEEE 802.3u and IEEE 802.3ab. PoE + Ethernet switches are offered with 30W per channel. 60W and ...



Our Industrial Ethernet Switch portfolio comprises Managed and Unmanaged Switches with Gigabit, PoE, IEC 61850 certification, and for DIN rail mounting.



FS PoE industrial switches support 60W PoE++, delivering reliable power and data for surveillance, IoT, automation, and smart city applications in demanding environments.



PoE switches built for industrial environments are specifically designed to be capable of withstanding extreme temperatures, humidity and electrical interference. This makes them ideal for harsh ...



This paper explains the basics of PoE, explores how the industrial sector can benefit from PoE technology, and describes the PoE capabilities that Cisco ® industrial switches offer and the ...



Rugged Industrial Ethernet Switches with PoE, 5-10 ports, 10/100/1000Base-T and fiber support. Built to withstand -40°C to 75°C, shocks and vibration.



This ruggedized industrial switch is developed for challenging environments when mounted inside a surveillance cabinet. Designed to withstand shock and vibrations, it can handle temperatures from ...



This ruggedized industrial switch is developed for challenging environments when mounted inside a surveillance cabinet. Designed to withstand shock and ...



AXIS T8504-R Industrial PoE Switch is a 4-port managed industrial PoE Gigabit switch. In addition, the switch is equipped with two RJ45 and two SFP data ports that allows for extra devices to be connected.

Contact Us

For more information, pricing, or custom solutions, please contact us:

Website: <https://samastersbaseball.co.za>

Email: sales@samastersbaseball.co.za

Phone: +27 63 874 2095

Address: 15 Innovation Drive, Technopark, Stellenbosch, 7600, South Africa

This document is for informational purposes only. Specifications subject to change without notice.

