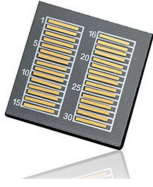


National Standard Optical Cable 4 Cores



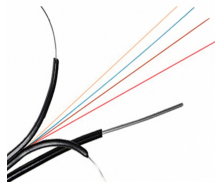
National Standard Optical Cable 4 Cores



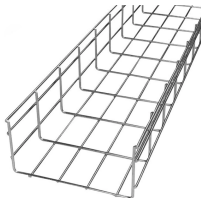
To date, Sumitomo Electric has developed a randomly coupled 4-core optical fiber, a randomly coupled 7-core optical fiber, and a randomly coupled 19-core optical fiber with a standard ...



Single Mode Optical fiber cable generally used for out-door telecommunication network or trunk or inter-exchange routes.



· BELLCOMMS Outdoor/Indoor, Drop wire, fiber optic cable special design used for campus backbone (inter-building), building backbone (intra-building) together with outdoor and indoor installation



*Multi-bare fibers used, to decrease the outer diameter and cable weight, also convenient for laying and splice □ *Cable using high property aramid yarn, increasing tension property, and fit for long distance ...



This cable contains a total of eight 4-core standard cladding diameter multi-core fibers within a 3 mm outer coating and enables information ...



To sum up: if you are looking for a high-performance, high-stability, and cost-effective optical fiber, then this national standard gyts/ta single-mode armored optical cable is definitely your ...



This is a standard set by the United States Department of Defense, which defines ...



Our comprehensive guide to types of fiber optic cables. Learn all about the differences between single mode and multimode cables, as well as the various fiber wavelengths and standard core sizes used ...





This is a standard set by the United States Department of Defense, which defines the performance and construction requirements for fiber optic cables used in military applications.



This cable contains a total of eight 4-core standard cladding diameter multi-core fibers within a 3 mm outer coating and enables information transmission equivalent to that provided by 32 ...



Photoelectric composite optical cable 4-core national standard outdoor 2-core 1.5 2.5 square 8-core 12-core optical fiber with power supply integrated line

	<p>Dimension 1.6mm±0. Imm(branch cord)/2.8mm±0. Imm (main cord) Material Stainless Steel Color Silvery White. UL94 V-0 (*Burning stops within 10 seconds on a vertical specimen, no drips of ...</p>
	<p>Outdoor Fiber Optic Cable, 4 Core, Steel Armored, PE, Jelly filled, GYXTW, Single Mode OS2 9/125 (G652D) 9.0mm. Good mechanical and temperature performance. High strength loose tube that is ...</p>

Contact Us

For more information, pricing, or custom solutions, please contact us:

Website: <https://samastersbaseball.co.za>

Email: sales@samastersbaseball.co.za

Phone: +27 63 874 2095

Address: 15 Innovation Drive, Technopark, Stellenbosch, 7600, South Africa

This document is for informational purposes only. Specifications subject to change without notice.

