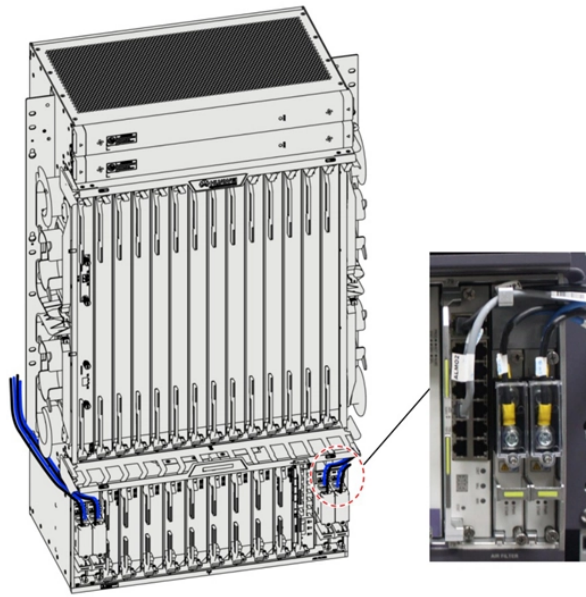
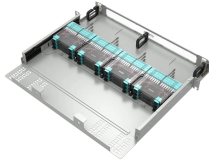


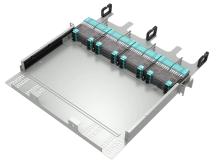
Model of explosion-proof electrical distribution box for factory use in Kenya



Model of explosion-proof electrical distribution box for factory use i



Custom non-standard explosion-proof enclosures can be designed based on customer electrical schematics, with detailed drawings included in quotations.



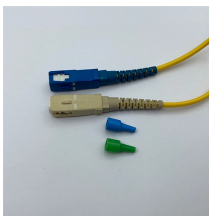
Explosion-proof lighting distribution boxes and cabinets come in a variety of models. They vary in terms of materials, including metal and flame-retardant plastic; installation methods, such as ...



Supermec ATEX Junction Box & Enclosures are designed to satisfy most of our clients' requirements for CONTROL explosion-proof and flameproof enclosures.



Atex control stations, explosion protected control units and distribution boxes made stainless steel maritime grade AISI 316L or AISI 304L. Atex Delvalle provides a custom build facility for Hazardous ...



Electrical apparatus for use in hazardous areas are assigned to various categories. The additional character G (gas) or D (dust) specifies whether the electrical apparatus may be installed in gas or ...



A well-designed explosion proof electrical distribution box goes far beyond simple circuit protection. It integrates multiple functional modules to meet the demanding requirements of chemical ...



Safely conduct, connect and distribute energy in hazardous areas with R. STAHL's terminal boxes. We offer bespoke, custom-made terminal boxes and terminal box combinations, as well as standard ...



Adopting the patented technology of the combined explosion-proof distribution box independently developed by the company, the modularization optimization design and combination of the ...



Custom non-standard explosion-proof enclosures can be designed based on customer electrical schematics, with detailed drawings included in ...



The explosion-proof distribution box safely delivers power in hazardous zones (oil, gas, chemical plants) with rugged, spark-resistant casing—ATEX/IECEX, IP66 certified for reliable operation in explosive ...



Warom specializes in manufacturing explosion-proof electrical equipment, with products covering explosion-proof lighting fixtures, explosion-proof distribution boxes, explosion-proof control ...

Contact Us

For more information, pricing, or custom solutions, please contact us:

Website: <https://samastersbaseball.co.za>

Email: sales@samastersbaseball.co.za

Phone: +27 63 874 2095

Address: 15 Innovation Drive, Technopark, Stellenbosch, 7600, South Africa

This document is for informational purposes only. Specifications subject to change without notice.

