

# Latest installation formula for cable trays



## Overview

The following is a basic formula of the mathematics employed in NEC 392. 22: Wires should usually sit in one flat layer. You can only fill the tray halfway (50%) to the top. The regulations vary according to the type of. 8 essential formulas with worked examples - Ohm's Law, Watt's Law, voltage drop, transformer ratio. A printable 2-page reference card sent to your inbox. Need to renew your Electrician license?

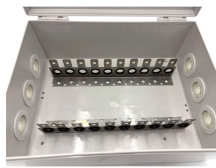
Pick your state and browse state-approved Electrician CE courses — complete your continuing education. The right cable tray sizing calculator helps engineers turn cable schedules into a verified tray width and fill check before material ordering and site installation. IEC 61537 covers cable tray and cable ladder systems for the support and accommodation of cables, while NEC Article 392 governs cable. Below is the detailed cable tray installation method statement not only for cable tray but also applicable for GI ladder and trunking for indoor and outdoor applications and in service rooms like pump rooms, electrical rooms and plant rooms etc. Select Fill Standard: Choose 40% for power cables (NEC compliant) or 50% for control/signal cables. Step-by-Step

Calculation Example 4. Select your tray type (ladder, ventilated trough, solid bottom, or channel), enter the tray width.

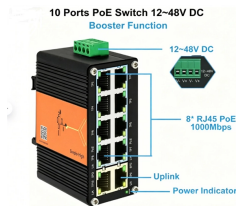
## Latest installation formula for cable trays



Calculate cable tray fill per NEC 392 — ladder, solid-bottom, and ventilated trough trays with sizing examples and code requirements.



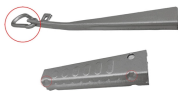
This guide covers the critical steps, from selecting the right electrical cable tray and performing accurate cable fill calculations to managing a safe cable pull through and ensuring all bonding and grounding ...



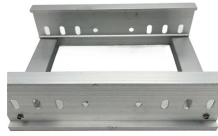
Use this cable tray sizing calculator to check fill %, select tray size, and comply with IEC 61537 & NEC 392 with formulas, example and checklist.



This article provides a comprehensive framework that governs various aspects of cable tray installations, including the types of cables that are deemed acceptable for use, requirements for ...



Easily calculate cable tray fill ratios with our free tool. Supports mixed cable sizes, NEC 40% rules, and metric/imperial units. Download your PDF report instantly.



Ensure all the relevant latest approved shop drawings are available with the electrical trunking and tray installation team. Required quantity of standard length of cable trays / ladders are shifted from site ...



Resources For Electrical & Electronic Engineers  
Cable Tray Ladder Trunking Wire Basket  
Installation Guidelines  
What Are Cable Trays? An assembly of units/sections with associated fittings that form a ...



Cable tray length is selected based on the load to be supported, the distance between the supports (also referred to as the span), and handling and installation constraints.



Core rules for selecting, installing, grounding, and filling cable trays—clearances, materials, separation, and bonding explained.



Cable tray fill per NEC Article 392 for ladder, ventilated trough, solid bottom, and channel trays. Multi-conductor and single-conductor rules.

## Contact Us

For more information, pricing, or custom solutions, please contact us:

Website: <https://samastersbaseball.co.za>

Email: [sales@samastersbaseball.co.za](mailto:sales@samastersbaseball.co.za)

Phone: +27 63 874 2095

Address: 15 Innovation Drive, Technopark, Stellenbosch, 7600, South Africa

This document is for informational purposes only. Specifications subject to change without notice.

