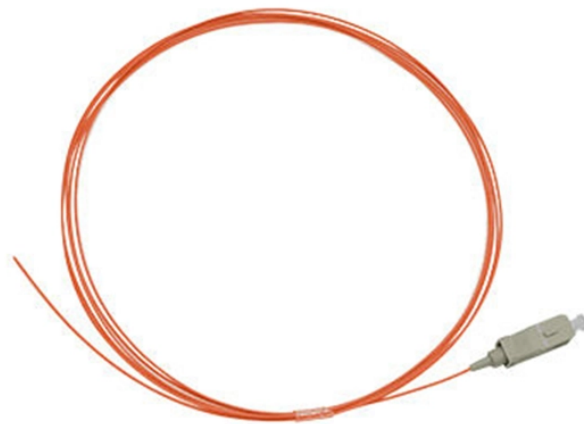


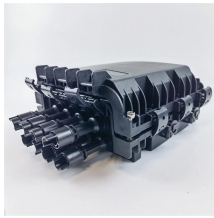
## Kta in relay protection



### Overview

The KTA 3-25 is a thermal motor protection relay designed to protect three-phase motors against overload conditions, phase loss, and abnormal operating currents. It provides adjustable current settings to match motor full load amps (FLA). They are intended to quickly identify a fault and isolate it so the balance of the system continue to run under normal conditions. The selection and applications of. Relion protection and control relays for several application reduce complexity. Long term cost reduction (TCO) for trainings and maintenance by reduce variety of relays A fast and selective arc fault mitigation for air-insulated LV & MV switchgear and Relion protection and control relays and sensor. The objective of this presentation is to convey a basic understanding of protective relays to an audience of engineers already familiar with low voltage protective device coordination.

## Kta in relay protection



Abstract: Information on the concepts of protection of ac transmission lines is presented in this guide. Applications of the concepts to accepted transmission line-protection schemes are also presented.



M. Kezunovic, et al., "Design, Modeling and Evaluation of Protective Relays for Power Systems," Springer, ISBN 978-3-319-20919-7, 2016.



Relay protection circuitry This handbook covers the code of practice in protection circuitry including standard lead and device numbers, mode of connections at terminal strips, colour codes in ...



As the protected components of the electrical systems have changed in size, configuration and their critical roles in the power system supply, some protection aspects need to be revisited (i.e. the use of ...



Product image is indicative only and provided as a guide.



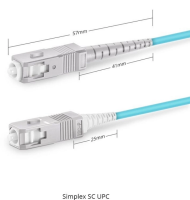
Because of this superb current limiting capability, KTA Motor Circuit Controllers have a short circuit capacity of up to 65kA at 480V and up to 47kA at 600V. Every KT9 device is individually calibrated at ...



Types of protection relays are mainly based on their characteristic, logic, on actuating parameter and operation mechanism. Protective relays can be categorized based on their operating ...



Various models of the KTV9 series self-protected combination motor controllers provide disconnection for motor branch circuits, branch-circuit and short-circuit protection (including magnetic protection), ...



The Sprecher and Schuh KTA7-25S is a 3 pole, Class 10 Manual Motor Starter that has adjustments from 0.10 to 32 AMPS. It has a rotary ON/OFF handle, phase ...



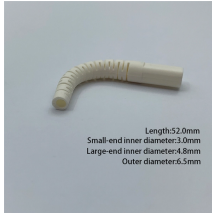
Fundamental concepts and terminology will be taught using the electromechanical overcurrent relay as a foundation and then these concepts will be expanded to modern numerical relays.



A fast and selective arc fault mitigation for air-insulated LV & MV switchgear and Relion protection and control relays and sensor technology protect staff and plant facilities for many years.



The KTA 3-25 is a thermal motor protection relay designed to protect three-phase motors against overload conditions, phase loss, and abnormal operating currents. It provides adjustable current ...



KTA7-25H-25A is a professional-grade thermal overload relay in the KTA7 series of Sprecher+Schuh, mainly used for the protection and control of three-phase asynchronous motors, in compliance with ...

## Contact Us

For more information, pricing, or custom solutions, please contact us:

Website: <https://samastersbaseball.co.za>

Email: [sales@samastersbaseball.co.za](mailto:sales@samastersbaseball.co.za)

Phone: +27 63 874 2095

Address: 15 Innovation Drive, Technopark, Stellenbosch, 7600, South Africa

This document is for informational purposes only. Specifications subject to change without notice.

