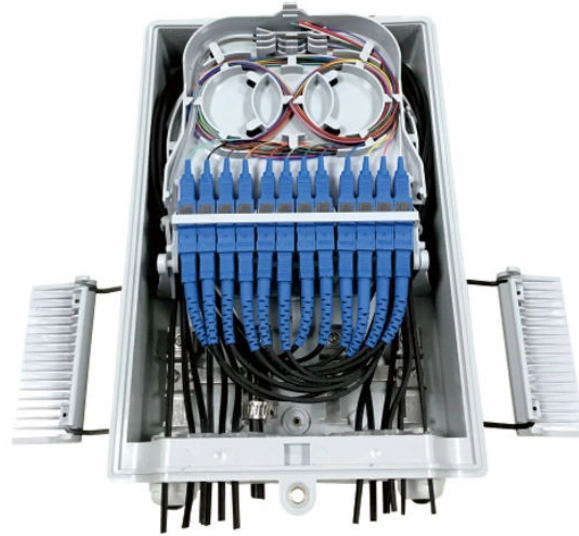


Korean Stainless Steel Optical Transmission Box



Korean Stainless Steel Optical Transmission Box



The ADSS/OPGW metal junction box is also called a splicing box that is designed to house the fiber core splices to the outdoor intermediate optical cable leading to the patch panel in the control room.



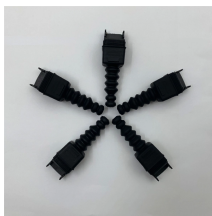
Through close collaboration with top-tier global talents from Korea and China, we elevate technological limits. Furthermore, we are expanding production bases beyond China to other countries, ...



We offer expert metal fabrication, steel fabrication, stainless steel fabrication, metal stamping, sheet metal fabrication, along with electrical assembly, wiring, die casting and injection molding.



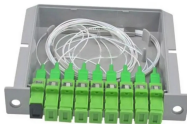
A global supplier of high-speed optical transceivers and optical passive devices, enabling video, voice, and data transmission over fiber optic cables for high-speed data and communication networks.



The ADSS/OPGW metal junction box is also called a splicing box ...



Covering voice, video and data transmission, our suite of telecoms solutions is the outcome of continuous multi-million Euro investment in R& D and production in more than 30 facilities worldwide.



2x3mm square type FTTH drop cable application. designed with unique mechanism, aligning fibers with Z Spring structure.....



The transmission network, operational since September 2023, spans over 1,000 km and is capable of transmitting 600G per wavelength in long-distance segments, connecting major cities nationwide ...



OSN 550 is new-generation optical transmission equipment developed by Huawei. It adopts the TDM + packet (MPLS/MPLS-TP-based) dual-domain architecture and supports a variety of service access ...



The South Korea Optical Junction Boxes Market is expected to witness sustained global growth driven by innovation, digitization, and emerging economy participation.



The box is made of high-strength stainless steel plate, which has high strength, anti-aging, anti-corrosion, and can resist accidental or malignant damage; The box adopts a double-layer structure, ...

Contact Us

For more information, pricing, or custom solutions, please contact us:

Website: <https://samastersbaseball.co.za>

Email: sales@samastersbaseball.co.za

Phone: +27 63 874 2095

Address: 15 Innovation Drive, Technopark, Stellenbosch, 7600, South Africa

This document is for informational purposes only. Specifications subject to change without notice.

