

## Junction box with 1 input and 6 outputs



## Junction box with 1 input and 6 outputs



Specification Color: White Material: ABS, PC Style: Modern Circuit Breaker Type: Standard Mounting Type: Wall Mount Operating Temperature: -30~70°C/-22~158°F Input: 6 Strings ...



Professional-grade ceiling junction box featuring WAGO rapid connection technology with one input and six output terminals. Part of ...



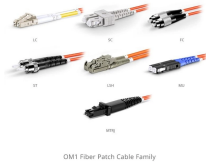
Up to 16 I/O signals can be consolidated over a single home-run connection on the box. These junction boxes provide a rugged solution with an IP67 rating or greater, making them ideal for both indoor and ...



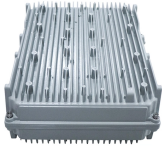
Versatile Input & Output Configurations:With 1-6 output options, the UKK80A adapts to various electrical setups, from 16mm<sup>2</sup> to 35mm<sup>2</sup> inputs. Compact & Space-Efficient Design:The ...



The one in multiple out junction box is a smart, space-saving, and efficient solution for modern industrial wiring. With modular flexibility and multi-channel output design, it ensures reliable and professional ...



Discover flame-retardant, weatherproof junction boxes to safely encase electrical splices. Explore a range of sizes and materials for reliable wiring solutions.



Etek DIN Rail Terminal Junction Box 1-Input 6-Output 690V AC/DC 160A [Read More »](#)



The DeltaVTM CTO CHARM Smart Junction Boxes provide an off-the-shelf solution for faster project execution and reduced installation costs. SJBs are factory tested products and ready for installation ...



Equipped with a rugged IP65-rated enclosure, it integrates high-quality fuses (1~32A), circuit breakers (16~125A), and surge protection devices to provide comprehensive protection for solar PV systems ...



Choose from our selection of junction boxes, including over 2,800 products in a wide range of styles and sizes. Same and Next Day Delivery.



Free sample! The distribution box can hold 6 cores termination and install 1x4 fiber optic splitter to distribute optical cable and split optical signal.



20.17"x18.90"x7.22" junction box, designed to support up to (6) discrete circuits with overvoltage protection (OVP) for (1) 1-1/4" hybrid input and (6) 5/8" hybrid jumpers output.

## Contact Us

For more information, pricing, or custom solutions, please contact us:

Website: <https://samastersbaseball.co.za>

Email: [sales@samastersbaseball.co.za](mailto:sales@samastersbaseball.co.za)

Phone: +27 63 874 2095

Address: 15 Innovation Drive, Technopark, Stellenbosch, 7600, South Africa

This document is for informational purposes only. Specifications subject to change without notice.

