

Is the fronthaul optical module installed on the RRU



Overview

These modules are installed between the BBU and RRU, converting high-speed electrical signals into optical signals for transmission via fiber, and back to electrical signals at the destination. This process ensures stable signal transmission over long distances and in complex. A CPRI cable is a fiber optic cable assembly used to carry fronthaul signals between baseband equipment (BBU) and remote radio equipment (RRU/RRH) in mobile networks, following the Common Public Radio Interface (CPRI) specification. This article will briefly introduce the key role and application scenarios of the CPRI specification and. This document describes the procedures of installing an eRRU. It also provides checklists as reference. In this document, eRRU3232 is used as an example. Difference in installation and operation of other eRRU products are also described.

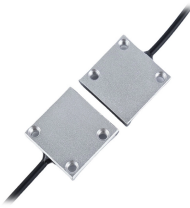
Is the fronthaul optical module installed on the RRU



Step 2 Connect the end labeled 1A and 1B of the optical cable to the optical module on the RRU side, as shown in Figure 8-28. Issue () Huawei Proprietary and ...



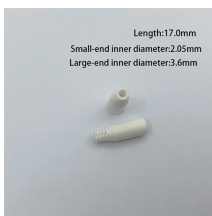
Take Verizon's speed test to see how fast your internet connection is. Check your Wi-Fi download and upload speeds and browse tips to improve your connection.



The CPRI protocol test application with BBU emulation included on EXFO's FTB-720G V2 will verify that the RRH is fully operational and that the right small form-factor pluggable (SFP) optical transceivers ...



A fronthaul segment that connects BBU and RRU is a part of an optical transport network which plays a very important role in 5G networks. It has many useful technologies in 5G such as ...



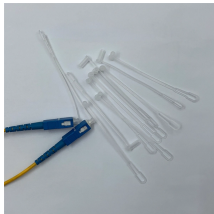
Test your current internet speed, and find out how fast your broadband wi-fi handles uploads and downloads. See Google Fiber plan options for faster internet.



Test your Internet connection. Check your network performance with our Internet speed test. Powered by Cloudflare's global edge network.



RRU (remote radio unit): mainly responsible for RF processing. It acts as a bridge between the antenna system and the BBU. On receive, the RRU filters and amplifies the RF signal ...



Step 2 Connect the end labeled 1A and 1B of the optical cable to the optical module on the RRU side, as shown in Figure 8-28. Issue () Huawei Proprietary and Confidential Copyright © Huawei ...



How fast is your download speed? In seconds, FAST 's simple Internet speed test will estimate your ISP speed.



- The performance of an optical module that is exposed to air for more than 20 minutes may be abnormal. Therefore, you must insert an optical fiber into an unpacked optical module within ...



Test your internet speed on any device with Speedtest by Ookla, available for free on desktop and mobile apps.



A CPRI cable is a fiber optic cable assembly used to carry fronthaul signals between baseband equipment (BBU) and remote radio equipment (RRU/RRH) in mobile networks, following the ...



These modules are installed between the BBU and RRU, converting high-speed electrical signals into optical signals for transmission via fiber, and back to electrical signals at the destination. ...



Speedtest is the definitive way to test the performance and quality of an internet connection. Since our founding in 2006, an unparalleled total of more than 55 billion consumer ...



CPRI modules are designed exclusively for the fronthaul link between a BBU and an RRU in a wireless base station. Their entire design is optimized for this point-to-point, synchronous ...



5G BBU & RRU Installation and Operation Guide - Free download as PDF File (.pdf), Text File (.txt) or read online for free.



Check the speed and performance of your connected devices with the speed test. A device speed test checks the speed between your smartphone, tablet, computer, or other device and the internet. You ...



Test your connection fast with Xfinity's internet speed test tool and get tips on how to improve your internet performance.



Check your internet speed with our simple and fast speed test. Get detailed results for your download speed, upload speed, and personalized insights into your connection performance.



It connects the Baseband Unit (BBU) to the Remote Radio Unit (RRU) or Remote Radio Head (RRH), ensuring high-speed digital transmission of radio signals, synchronization data, and ...



Test your internet speed instantly with TestMySpeed, the leading broadband speed test. Get real-time results for download, upload, and ping.

Contact Us

For more information, pricing, or custom solutions, please contact us:

Website: <https://samastersbaseball.co.za>

Email: sales@samastersbaseball.co.za

Phone: +27 63 874 2095

Address: 15 Innovation Drive, Technopark, Stellenbosch, 7600, South Africa

This document is for informational purposes only. Specifications subject to change without notice.

